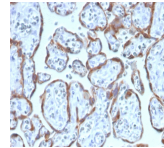


# PAPP-A / Pappalysin-1 Monoclonal Mouse Antibody (PAPPA/2717)



## Product Description

Pregnancy Associated Plasma Protein (PAPP-A) is found in maternal blood that increases as pregnancy progresses, although it is not specific to pregnancy. It is principally expressed in the syncytiotrophoblast of the placenta, which forms the main source of circulating maternal PAPP-A. It cleaves insulin-like growth factor binding proteins (IGFBPs), IGFBP-4 and IGFBP-5. IGFBP-4 cleavage is enhanced significantly in the presence of bound IGF, whereas IGFBP-5 cleavage is inhibited slightly by IGF presence. It is thought to be involved in local proliferative processes such as wound healing and bone remodeling. Low plasma level of this protein has been suggested as a biochemical marker for pregnancies with aneuploid fetuses. PAPPA has also been suggested as a potential biomarker of acute myocardial infarction and coronary artery disease (CAD).

Primary antibodies are available purified, or with a selection of fluorescent CF® dyes and other labels. CF® dyes offer exceptional brightness and photostability. See the [CF® Dye Brochure](#) for more information. Note: Conjugates of blue fluorescent dyes like CF®405S and CF®405M are not recommended for detecting low abundance targets, because blue dyes have lower fluorescence and can give higher non-specific background than other dye colors.

**Stock status:** Because Biotium offers a large number of antibody and conjugation options, primary antibody conjugates may be made to order. Typical lead times are up to one week for CF® dye and biotin conjugates, and up to 2-3 weeks for fluorescent protein and enzyme conjugates. Please email [order@biotium.com](mailto:order@biotium.com) to inquire about stock status and lead times before placing your order.

## Product attributes

|                                       |  |
|---------------------------------------|--|
| Antibody number                       | #2717  |
| Antibody reactivity (target)          | PAPP-A, Pappalysin-1   |
| Antibody type                         | Primary  |
| Host species                          | Mouse  |
| Clonality                             | Monoclonal   |
| Clone                                 | PAPPA/2717   |
| Isotype                               | IgG2b, kappa   |
| Molecular weight                      | 181 kDa  |
| Synonyms                              | ASBABP2; Aspecific BCL2 ARE binding protein 2; Differentially placenta 1 expressed protein; DIPLA1; IGF-dependent; IGFBP4ase; Insulin-like growth factor-dependent IGF-binding protein 4 protease (IGFBP-4 protease); PAPA; PAPP A; PAPPA1; Pappalysin-1; Pregnancy Associated Plasma Protein A (PAPP-A) |
| Human gene symbol                     | PAPPA  |
| Entrez gene ID                        | 5069   |
| SwissProt                             | Q13219   |
| Unigene                               | 643599   |
| Immunogen                             | Recombinant fragment (within aa 351-523) of human PAPP-A protein (exact sequence is proprietary)   |
| Verified antibody applications        | IHC (FFPE) (verified)  |
| Antibody target cellular localization | Secreted (extracellular)   |
| Species reactivity                    | Human  |
| Positive control                      | Human placenta tissue.   |
| Shipping condition                    | Room temperature   |
| Storage Conditions                    | Store at 2 to 8 °C, Protect fluorescent conjugates from light, Note: store BSA-free antibodies at -10 to -35 °C  |
| Regulatory status                     | For research use only (RUO)  |
| Antibody/conjugate formulation        | Conjugates: 0.1 mg/mL in PBS/0.1% BSA/0.05% azide, HRP conjugates: 0.1 mg/mL in PBS/0.05% BSA, Purified: 0.2 mg/mL in PBS/0.05% BSA/0.05% azide, Purified, BSA-free: 1 mg/mL in PBS without azide  |
| Validated in protein array            | Monospecific   |
| Shelf life                            | Guaranteed for at least 24 months from date of receipt when stored as recommended  |

| Antibody # prefix | Conjugation        | Ex/Em (nm) | Laser line | Detection channel        | Dye Features                     |
|-------------------|--------------------|------------|------------|--------------------------|----------------------------------|
| BNC04             | CF®405S            | 404/431    | 405        | DAPI (microscopy), AF405 | <a href="#">CF®405S Features</a> |
| BNC88             | CF®488A            | 490/515    | 488        | GFP, FITC                | <a href="#">CF®488A Features</a> |
| BNC68             | CF®568             | 562/583    | 532, 561   | RFP, TRITC               | <a href="#">CF®568 Features</a>  |
| BNC94             | CF®594             | 593/614    | 561        | Texas Red®               | <a href="#">CF®594 Features</a>  |
| BNC40             | CF®640R            | 642/662    | 633-640    | Cy®5                     | <a href="#">CF®640R Features</a> |
| BNC47             | CF®647             | 650/665    | 633-640    | Cy®5                     | <a href="#">CF®647 Features</a>  |
| BNCB              | Biotin             | N/A        | N/A        | N/A                      |                                  |
| BNUB              | Purified           | N/A        | N/A        | N/A                      |                                  |
| BNUM              | Purified, BSA-free | N/A        | N/A        | N/A                      |                                  |

Alexa Fluor, Pacific Blue, Pacific Orange, and Texas Red are trademarks or registered trademarks of Thermo Fisher Scientific; Cy is a registered trademark of Cytiva; IRDye, LI-COR, and of LI-COR Bioscience.