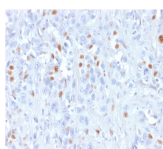


p21 / WAF1 Recombinant Monoclonal Mouse Antibody (rCIP1/823)



Product Description

This MAb recognizes a 21 kDa protein, identified as the p21WAF1 tumor suppressor protein. This MAb is highly specific to p21 and shows no cross-reaction with other closely related mitotic inhibitors. p21WAF1 is a specific inhibitor of cdk's and a tumor suppressor involved in the pathogenesis of a variety of malignancies. The expression of this gene acts as an inhibitor of the cell cycle during G1 phase and is tightly controlled by the tumor suppressor protein p53. Its expression is induced by the wild type, but not mutant, p53 suppressor protein. Normal cells generally display a rather intense nuclear p21 expression. Loss of p21 expression has been reported in many carcinomas (gastric carcinoma, non-small cell lung carcinoma, thyroid carcinoma).

Primary antibodies are available purified, or with a selection of fluorescent CF® dyes and other labels. CF® dyes offer exceptional brightness and photostability. See the [CF® Dye Brochure](#) for more information. Note: Conjugates of blue fluorescent dyes like CF®405S and CF®405M are not recommended for detecting low abundance targets, because blue dyes have lower fluorescence and can give higher non-specific background than other dye colors.

Stock status: Because Biotium offers a large number of antibody and conjugation options, primary antibody conjugates may be made to order. Typical lead times are up to one week for CF® dye and biotin conjugates, and up to 2-3 weeks for fluorescent protein and enzyme conjugates. Please email order@biotium.com to inquire about stock status and lead times before placing your order.

Catalog number key for antibody number 2292, Anti-p21WAF1 (rCIP1/823)

Product attributes

| | |
|---------------------------------------|--|
| Antibody number | #2292 |
| Antibody reactivity (target) | p21WAF1 |
| Antibody type | Primary |
| Host species | Mouse |
| Clonality | Recombinant Monoclonal |
| Clone | rCIP1/823 |
| Isotype | IgG1, kappa |
| Molecular weight | 21 kDa |
| Synonyms | Activating Fragment 1; CAP20; CDK-interacting protein 1; CDKI; CDKN1; CDKN1A; CIP1; Cyclin-dependent kinase inhibitor 1A (p21; Cip1); DNA Synthesis Inhibitor; MDA6; Melanoma Differentiation Associated Protein 6; p21Cip1/Waf1; PIC1; SDI1; SLC12A9; Wild type p53 activated fragment 1 (WAF1) |
| Human gene symbol | CDKN1A |
| Entrez gene ID | 1026 |
| SwissProt | P38936 |
| Unigene | 370771 |
| Immunogen | Recombinant full-length human CDKN1A protein |
| Verified antibody applications | IHC (FFPE) (verified), WB (verified) |
| Antibody target cellular localization | Nucleus |
| Species reactivity | Human |
| Positive control | HeLa Cells. Skin, colon, or breast carcinoma. |
| Shipping condition | Room temperature |
| Storage Conditions | Store at 2 to 8 °C, Protect fluorescent conjugates from light, Note: store BSA-free antibodies at -10 to -35 °C |
| Regulatory status | For research use only (RUO) |
| Antibody/conjugate formulation | Conjugates: 0.1 mg/mL in PBS/0.1% BSA/0.05% azide, HRP conjugates: 0.1 mg/mL in PBS/0.05% BSA, Purified: 0.2 mg/mL in PBS/0.05% BSA/0.05% azide, Purified, BSA-free: 1 mg/mL in PBS without azide |
| Shelf life | Guaranteed for at least 24 months from date of receipt when stored as recommended |
| Product origin | Product may contain either bovine serum albumin (BSA) from bovine serum (<i>Bos taurus</i>), or recombinant BSA produced in Chinese hamster ovary cells. Inquire for the specific lot. |

| Antibody # prefix | Conjugation | Ex/Em (nm) | Laser line | Detection channel | Dye Features |
|-------------------|--------------------|------------|------------|--------------------------|----------------------------------|
| BNC04 | CF®405S | 404/431 | 405 | DAPI (microscopy), AF405 | CF®405S Features |
| BNC88 | CF®488A | 490/515 | 488 | GFP, FITC | CF®488A Features |
| BNC68 | CF®568 | 562/583 | 532, 561 | RFP, TRITC | CF®568 Features |
| BNC94 | CF®594 | 593/614 | 561 | Texas Red® | CF®594 Features |
| BNC40 | CF®640R | 642/662 | 633-640 | Cy®5 | CF®640R Features |
| BNC47 | CF®647 | 650/665 | 633-640 | Cy®5 | CF®647 Features |
| BNC74 | CF®740 | 742/767 | 633-685 | 775/50 | CF®740 Features |
| BNCB | Biotin | N/A | N/A | N/A | |
| BNUB | Purified | N/A | N/A | N/A | |
| BNUM | Purified, BSA-free | N/A | N/A | N/A | |

Alexa Fluor, Pacific Blue, Pacific Orange, and Texas Red are trademarks or registered trademarks of Thermo Fisher Scientific; Cy is a registered trademark of Cytiva; IRDye, LI-COR, and Odyssey are registered trademarks of LI-COR Bioscience.

This datasheet was generated on November 27, 2024 at 02:46:16 AM. Visit product page to check for updated information before use. Product link: <https://biotium.com/product/p21-waf1-recombinant-monoclonal-mouse-antibody-rcip1-823/>