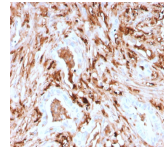


Ferritin, Light Chain Recombinant Monoclonal Mouse Antibody (rFTL/1388)



Product Description

Mammalian ferritins consist of 24 subunits made up of 2 types of polypeptide chains, ferritin heavy chain and ferritin light chain. Ferritin heavy chains catalyze the first step in iron storage, the oxidation of Fe (II), whereas ferritin light chains promote the nucleation of ferrihydrite, enabling storage of Fe (III). Light chain ferritin is involved in cataracts by at least two mechanisms, hereditary hyperferritinemia cataract syndrome, in which light chain ferritin is overexpressed, and oxidative stress, an important factor in the development of ageing-related cataracts. Primary antibodies are available purified, or with a selection of fluorescent CF® dyes and other labels. CF® dyes offer exceptional brightness and photostability. See the [CF® Dye Brochure](#) for more information. Note: Conjugates of blue fluorescent dyes like CF®405S and CF®405M are not recommended for detecting low abundance targets, because blue dyes have lower fluorescence and can give higher non-specific background than other dye colors.

Stock status: Because Biotium offers a large number of antibody and conjugation options, primary antibody conjugates may be made to order. Typical lead times are up to one week for CF® dye and biotin conjugates, and up to 2-3 weeks for fluorescent protein and enzyme conjugates. Please email order@biotium.com to inquire about stock status and lead times before placing your order.

Product attributes

Antibody number	#3771
Antibody reactivity (target)	Ferritin, Light Chain
Antibody type	Primary
Host species	Mouse
Clonality	Recombinant Monoclonal
Clone	rFTL/1388
Isotype	IgG1, kappa
Molecular weight	19-25 kDa
Synonyms	Ferritin L chain; Ferritin L subunit; Ferritin light chain; Ferritin light polypeptide; FTL; LFTD; NBIA3
Human gene symbol	FTL
Entrez gene ID	2512
SwissProt	P02792
Unigene	433670
Immunogen	Recombinant fragment (around aa 38-165) of human FTL protein (exact sequence is proprietary)
Verified antibody applications	IHC (FFPE) (verified), WB (verified)
Antibody target cellular localization	Cytoplasmic
Species reactivity	Human
Positive control	HepG2, HeLa, HL-60 or 293T cells. Pancreas, Liver, Cerebellum or Testis.
Shipping condition	Room temperature
Storage Conditions	Store at 2 to 8 °C, Protect fluorescent conjugates from light, Note: store BSA-free antibodies at -10 to -35 °C
Regulatory status	For research use only (RUO)
Antibody/conjugate formulation	Conjugates: 0.1 mg/mL in PBS/0.1% BSA/0.05% azide, HRP conjugates: 0.1 mg/mL in PBS/0.05% BSA, Purified: 0.2 mg/mL in PBS/0.05% BSA/0.05% azide, Purified, BSA-free: 1 mg/mL in PBS without azide
Shelf life	Guaranteed for at least 24 months from date of receipt when stored as recommended

Antibody # prefix	Conjugation	Ex/Em (nm)	Laser line	Detection channel	Dye Features
BNC04	CF®405S	404/431	405	DAPI (microscopy), AF405	CF®405S Features
BNC88	CF®488A	490/515	488	GFP, FITC	CF®488A Features
BNC68	CF®568	562/583	532, 561	RFP, TRITC	CF®568 Features
BNC94	CF®594	593/614	561	Texas Red®	CF®594 Features
BNC40	CF®640R	642/662	633-640	Cy®5	CF®640R Features
BNC47	CF®647	650/665	633-640	Cy®5	CF®647 Features
BNCB	Biotin	N/A	N/A	N/A	
BNUB	Purified	N/A	N/A	N/A	
BNUM	Purified, BSA-free	N/A	N/A	N/A	

Alexa Fluor, Pacific Blue, Pacific Orange, and Texas Red are trademarks or registered trademarks of Thermo Fisher Scientific; Cy is a registered trademark of Cytiva; IRDye, LI-COR, LI-COR Bioscience.