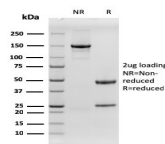


# EGFR Recombinant Monoclonal Mouse Antibody (rGFR/1667)



## Product Description

This MAb recognizes a protein of 170 kDa, identified as EGFR. EGFR is type I receptor tyrosine kinase with sequence homology to erbB-1, -2, -3 -4 or HER-1, -2, -3 -4. It binds to Epidermal Growth Factor (EGF), Transforming Growth Factor- $\alpha$  (TGF- $\alpha$ ), Heparin-binding EGF (HB-EGF), amphiregulin, betacellulin and epiregulin. EGFR is overexpressed in tumors of breast, brain, bladder, lung, gastric, head neck, esophagus, cervix, vulva, ovary, and endometrium. It is predominantly present in squamous cell carcinomas. Primary antibodies are available purified, or with a selection of fluorescent CF $\oplus$  dyes and other labels. CF $\oplus$  dyes offer exceptional brightness and photostability. See the [CF \$\oplus\$  Dye Brochure](#) for more information. Note: Conjugates of blue fluorescent dyes like CF $\oplus$ 405S and CF $\oplus$ 405M are not recommended for detecting low abundance targets, because blue dyes have lower fluorescence and can give higher non-specific background than other dye colors. **Stock status:** Because Biotium offers a large number of antibody and conjugation options, primary antibody conjugates may be made to order. Typical lead times are up to one week for CF $\oplus$  dye and biotin conjugates, and up to 2-3 weeks for fluorescent protein and enzyme conjugates. Please email [order@biotium.com](mailto:order@biotium.com) to inquire about stock status and lead times before placing your order.

## Product attributes

Antibody number	#3605
Antibody reactivity (target)	EGFR
Antibody type	Primary
Host species	Mouse
Clonality	Recombinant Monoclonal
Clone	rGFR/1667
Isotype	IgG1, kappa
Molecular weight	~170 kDa (wild type) and ~145 kDa (vIII variant)
Synonyms	ErbB1; ERBB1; Errp; HER1; mENA; PIG61; Proto-oncogene c-ErbB-1; Receptor Tyrosine Protein Kinase; ErbB1; Urogastrone; wa2; Wa5
Human gene symbol	EGFR
Entrez gene ID	1956
SwissProt	P00533
Unigene	488293
Immunogen	Recombinant full-length human EGFR protein
Verified antibody applications	WB (verified)
Antibody target cellular localization	Plasma membrane
Species reactivity	Human
Positive control	A431 cells. Placenta, breast, colon or bladder cancer (IHC).
Shipping condition	Room temperature
Storage Conditions	Store at 2 to 8 °C. Protect fluorescent conjugates from light. Note: store BSA-free antibodies at -10 to -35 °C
Regulatory status	For research use only (RUO)
Antibody/conjugate formulation	Conjugates: 0.1 mg/mL in PBS/0.1% BSA/0.05% azide, HRP conjugates: 0.1 mg/mL in PBS/0.05% BSA, Purified: 0.2 mg/mL in PBS/0.05% BSA/0.05% azide, Purified, BSA-free: 1 mg/mL in PBS without azide
Shelf life	Guaranteed for at least 24 months from date of receipt when stored as recommended
Tumor expression	Squamous cell carcinoma

Antibody # prefix	Conjugation	Ex/Em (nm)	Laser line	Detection channel	Dye Features
BNC04	CF $\oplus$ 405S	404/431	405	DAPI (microscopy), AF405	<a href="#">CF<math>\oplus</math>405S Features</a>
BNC88	CF $\oplus$ 488A	490/515	488	GFP, FITC	<a href="#">CF<math>\oplus</math>488A Features</a>
BNC68	CF $\oplus$ 568	562/583	532, 561	RFP, TRITC	<a href="#">CF<math>\oplus</math>568 Features</a>
BNC94	CF $\oplus$ 594	593/614	561	Texas Red $\oplus$	<a href="#">CF<math>\oplus</math>594 Features</a>
BNC40	CF $\oplus$ 640R	642/662	633-640	Cy $\oplus$ 5	<a href="#">CF<math>\oplus</math>640R Features</a>
BNC47	CF $\oplus$ 647	650/665	633-640	Cy $\oplus$ 5	<a href="#">CF<math>\oplus</math>647 Features</a>
BNCB	Biotin	N/A	N/A	N/A	
BNUB	Purified	N/A	N/A	N/A	
BNUM	Purified, BSA-free	N/A	N/A	N/A	

Alexa Fluor, Pacific Blue, Pacific Orange, and Texas Red are trademarks or registered trademarks of Thermo Fisher Scientific; Cy is a registered trademark of Cytiva; IRDye, LI-COR, LI-COR Bioscience.

This datasheet was generated on May 13, 2024 at 01:45:53 PM. Visit product page to check for updated information before use.

Product link: <https://biotium.com/product/egfr-recombinant-monoclonal-mouse-antibody-rgfr-1667/>