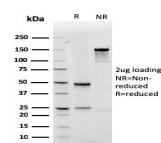


GLUT-1 Recombinant Monoclonal Mouse Antibody (rGLUT1/2476)



Product Description

Recognizes a protein of 55 kDa, which is identified as GLUT-1. Glucose transporters are integral membrane glycoproteins involved in transporting glucose into most cells. There are many types of glucose transport carrier proteins, designated as Glut-1 to Glut-12. Glut-1 is a major glucose transporter in the mammalian blood-brain barrier. It is expressed in high density on the membranes of human erythrocytes and the brain capillaries that comprise the blood-brain barrier. Glut-1 is expressed at variable levels in many human tissues. Overexpression of Glut-1 has been linked to tumor progression or poor survival of patients with carcinomas of the colon, breast, cervical, lung, bladder and mesothelioma. Glut-1 is a sensitive and specific marker for the differentiation of malignant mesothelioma (positive) from reactive mesothelium (negative).

Primary antibodies are available purified, or with a selection of fluorescent CF® dyes and other labels. CF® dyes offer exceptional brightness and photostability. See the [CF® Dye Brochure](#) for more information. Note: Conjugates of blue fluorescent dyes like CF®405S and CF®405M are not recommended for detecting low abundance targets, because blue dyes have lower fluorescence and can give higher non-specific background than other dye colors.

Stock status: Because Biotium offers a large number of antibody and conjugation options, primary antibody conjugates may be made to order. Typical lead times are up to one week for CF® dye and biotin conjugates, and up to 2-3 weeks for fluorescent protein and enzyme conjugates. Please email order@biotium.com to inquire about stock status and lead times before placing your order.

Catalog number key for antibody number 3795, Anti-GLUT-1 (rGLUT1/2476)

Product attributes

Antibody number	#3795
Antibody reactivity (target)	GLUT-1
Antibody type	Primary
Host species	Mouse
Clonality	Monoclonal, Recombinant Monoclonal
Clone	rGLUT1/2476
Isotype	IgG1, kappa
Molecular weight of antigen	55 kDa
Synonyms	Erythrocyte/hepatoma glucose transporter; Glucose transporter type-1; GLUT1; GLUT1DS; GLUTB; GT1; GTG1; Gtg3; HepG2 glucose transporter; PED; RATGTG1; Solute carrier family 2; Solute carrier family 2; facilitated glucose transporter member 1 (SLC2A1)
Human gene symbol	SLC2A1
Entrez gene ID	6513
SwissProt	P11166
Unigene	473721
Immunogen	Recombinant fragment of human GLUT1 protein (around aa 203-305) (exact sequence is proprietary)
Verified antibody applications	IHC (FFPE) (verified)
Antibody target cellular localization	Plasma membrane
Species reactivity	Human
Positive control	K562, A431, MDA-MB-231 cells or erythrocytes. Mesothelioma or breast, colon and ovarian carcinoma.
Shipping condition	Room temperature
Storage Conditions	Store at 2 to 8 °C. Protect fluorescent conjugates from light, Note: store BSA-free antibodies at -10 to -35 °C
Regulatory status	For research use only (RUO)
Antibody/conjugate formulation	Conjugates: 0.1 mg/mL in PBS/0.1% BSA/0.05% azide, HRP conjugates: 0.1 mg/mL in PBS/0.05% BSA, Purified: 0.2 mg/mL in PBS/0.05% BSA/0.05% azide, Purified, BSA-free: 1 mg/mL in PBS without azide
Shelf life	Guaranteed for at least 24 months from date of receipt when stored as recommended
Product origin	Product may contain either bovine serum albumin (BSA) from bovine serum (<i>Bos taurus</i>), or recombinant BSA produced in Chinese hamster ovary cells. Inquire for the specific lot.
Tumor expression	Bladder cancer, Breast cancer, Cervical cancer, Gastrointestinal cancer, Lung cancer, Mesothelioma

Antibody # prefix	Conjugation	Ex/Em (nm)	Laser line	Detection channel	Dye Features
BNC04	CF®405S	404/431	405	DAPI (microscopy), AF405	CF®405S Features
BNC88	CF®488A	490/515	488	GFP, FITC	CF®488A Features
BNC68	CF®568	562/583	532, 561	RFP, TRITC	CF®568 Features
BNC94	CF®594	593/614	561	Texas Red®	CF®594 Features
BNC40	CF®640R	642/662	633-640	Cy®5	CF®640R Features
BNC47	CF®647	650/665	633-640	Cy®5	CF®647 Features
BNC74	CF®740	742/767	633-685	775/50	CF®740 Features
BNCB	Biotin	N/A	N/A	N/A	
BNUB	Purified	N/A	N/A	N/A	
BNUM	Purified, BSA-free	N/A	N/A	N/A	

Alexa Fluor, Pacific Blue, Pacific Orange, and Texas Red are trademarks or registered trademarks of Thermo Fisher Scientific; Cy is a registered trademark of Cytiva; IRDye, LI-COR, and Odyssey are registered trademarks of LI-COR Bioscience.

This datasheet was generated on June 20, 2026 at 10:42:12 PM. Visit product page to check for updated information before use. Product link: <https://biotium.com/product/glut-1-recombinant-monoclonal-mouse-antibody-rglut1-2476/>