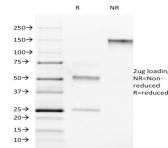


## ROR-Gamma / RORC Monoclonal Mouse Antibody (RORC/2942)



### Product Description

This MAb recognizes a protein of 63 kDa, identified as ROR-C. Its epitope maps in between aa1-50. The nuclear orphan receptors ROR and ROR are members of the nuclear hormone receptor superfamily. Members of this family act by directly associating with DNA sequences known as hormone response elements (HREs) and typically bind DNA as either homo- or heterodimers. RORalpha and RORgamma are unique in that they bind DNA as monomers. RORalpha has multiple isoforms that share common DNA and putative ligand-binding domains, but differ in their amino terminal domains, which are generated by alternative RNA processing. RORgamma comprises a 560 amino acid protein that shares 50% amino acid identity with RORalpha and is most highly expressed in skeletal muscle. Although these proteins are considered orphan receptors, due to a lack of defined ligands, experimental evidence has shown that melatonin may be the natural ligand for these nuclear receptors.

Primary antibodies are available purified, or with a selection of fluorescent CF® dyes and other labels. CF® dyes offer exceptional brightness and photostability. See the [CF® Dye Brochure](#) for more information. Note: Conjugates of blue fluorescent dyes like CF®405S and CF®405M are not recommended for detecting low abundance targets, because blue dyes have lower fluorescence and can give higher non-specific background than other dye colors.

**Stock status:** Because Biotium offers a large number of antibody and conjugation options, primary antibody conjugates may be made to order. Typical lead times are up to one week for CF® dye and biotin conjugates, and up to 2-3 weeks for fluorescent protein and enzyme conjugates. Please email [order@biotium.com](mailto:order@biotium.com) to inquire about stock status and lead times before placing your order.

### Product attributes

|                                |   |
|--------------------------------|---|
| Antibody number                | #2942   |
| Antibody reactivity (target)   | ROR-Gamma, RORC   |
| Antibody type                  | Primary   |
| Host species                   | Mouse   |
| Clonality                      | Monoclonal  |
| Clone                          | RORC/2942   |
| Isotype                        | IgG2a, kappa  |
| Molecular weight               | 63 kDa  |
| Synonyms                       | Nuclear receptor ROR-gamma; Nuclear receptor RZR-gamma; Nuclear receptor subfamily 1 group F member 3 (NR1F3); RAR related orphan receptor C; Retinoid-related orphan receptor-gamma (RORC); Rorc; RZR GAMMA; RZRG; TOR   |
| Human gene symbol              | RORC  |
| Entrez gene ID                 | 6097  |
| SwissProt                      | P51449  |
| Unigene                        | 256022; 607993  |
| Immunogen                      | Recombinant full-length human RORC protein  |
| Antibody target cellular       | Nucleus   |
| Species reactivity             | Human   |
| Antibody application notes     | For coating for ELISA, order Ab without BSA. Higher concentration may be required for direct detection using primary antibody conjugates than for indirect detection with secondary antibody. Optimal dilution and staining procedure for a specific application should be determined by user. Recommended starting concentrations for titration are 1-2 ug/mL for most applications, or 1 ug/million cells/100 uL for flow cytometry |
| Positive control               | Human Lymphocytes. Liver or skeletal muscle tissue.   |
| Shipping condition             | Room temperature  |
| Storage Conditions             | Store at 2 to 8 °C, Protect fluorescent conjugates from light, Note: store BSA-free antibodies at -10 to -35 °C   |
| Regulatory status              | For research use only (RUO)   |
| Antibody/conjugate formulation | Conjugates: 0.1 mg/mL in PBS/0.1% BSA/0.05% azide, HRP conjugates: 0.1 mg/mL in PBS/0.05% BSA, Purified: 0.2 mg/mL in PBS/0.05% BSA/0.05% azide, Purified, BSA-free: 1 mg/mL in PBS without azide   |
| Validated in protein array     | Monospecific  |
| Shelf life                     | Guaranteed for at least 24 months from date of receipt when stored as recommended   |

| Antibody # prefix | Conjugation        | Ex/Em (nm) | Laser line | Detection channel        | Dye Features                     |
|-------------------|--------------------|------------|------------|--------------------------|----------------------------------|
| BNC04             | CF®405S            | 404/431    | 405        | DAPI (microscopy), AF405 | <a href="#">CF®405S Features</a> |
| BNC88             | CF®488A            | 490/515    | 488        | GFP, FITC                | <a href="#">CF®488A Features</a> |
| BNC68             | CF®568             | 562/583    | 532, 561   | RFP, TRITC               | <a href="#">CF®568 Features</a>  |
| BNC94             | CF®594             | 593/614    | 561        | Texas Red®               | <a href="#">CF®594 Features</a>  |
| BNC40             | CF®640R            | 642/662    | 633-640    | Cy®5                     | <a href="#">CF®640R Features</a> |
| BNC47             | CF®647             | 650/665    | 633-640    | Cy®5                     | <a href="#">CF®647 Features</a>  |
| BNCB              | Biotin             | N/A        | N/A        | N/A                      |                                  |
| BNUB              | Purified           | N/A        | N/A        | N/A                      |                                  |
| BNUM              | Purified, BSA-free | N/A        | N/A        | N/A                      |                                  |

Alexa Fluor, Pacific Blue, Pacific Orange, and Texas Red are trademarks or registered trademarks of Thermo Fisher Scientific; Cy is a registered trademark of Cytiva; IRDye, LI-COR, and of LI-COR Bioscience.