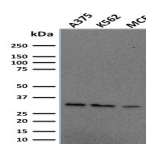


# Replication Protein A2 Monoclonal Mouse Antibody (RPA2/2106)



## Product Description

Recognizes a protein of 34 kDa, identified as a subunit of Replication Protein A (RPA) (also known as human single-stranded DNA binding protein, or HSSB). RPA from human cells is a stable heterotrimer of 70 kDa, 32-34 kDa, and 11-14 kDa subunits (RPA70, RPA32, and RPA14 respectively). It is involved in DNA replication, repair, and recombination. RPA is required for the SV40 large tumor antigen-catalyzed unwinding of SV40 DNA and stimulates DNA polymerase (pol) alpha and delta. RPA34 is phosphorylated at the G1/S boundary of the cell cycle or upon exposure of cells to DNA damage-inducing agents including ionizing and UV radiation.

Primary antibodies are available purified, or with a selection of fluorescent CF® dyes and other labels. CF® dyes offer exceptional brightness and photostability. See the [CF® Dye Brochure](#) for more information. Note: Conjugates of blue fluorescent dyes like CF®405S and CF®405M are not recommended for detecting low abundance targets, because blue dyes have lower fluorescence and can give higher non-specific background than other dye colors.

**Stock status:** Because Biotium offers a large number of antibody and conjugation options, primary antibody conjugates may be made to order. Typical lead times are up to one week for CF® dye and biotin conjugates, and up to 2-3 weeks for fluorescent protein and enzyme conjugates. Please email [order@biotium.com](mailto:order@biotium.com) to inquire about stock status and lead times before placing your order.

## Product attributes

Antibody number	#2106
Antibody reactivity (target)	Replication Protein A2
Antibody type	Primary
Host species	Mouse
Clonality	Monoclonal
Clone	RPA2/2106
Isotype	IgG2b, kappa
Molecular weight	32-34 kDa
Synonyms	p32; p34; REPA2; Replication protein A 32kDa subunit; Replication protein A 34kDa subunit; Replication protein A2; RF-A protein 2; Rf-A2; RFA; RP-A p32; RP-A p34; RP21C; RPA32; RPA34; RpLP1; RpP2
Human gene symbol	RPA2
Entrez gene ID	6118
SwissProt	P15927
Unigene	703070; 79411
Immunogen	Recombinant human full-length Replication protein A2 (RPA2) protein
Verified antibody applications	WB (verified)
Antibody target cellular localization	Nucleus
Species reactivity	Human
Antibody application notes	Western blot 1-2 ug/mL; Optimal dilution for a specific application should be determined.
Positive control	MCF-7, HeLa or HepG2 cells. Human tonsil (IHC).
Shipping condition	Room temperature
Storage Conditions	Store at 2 to 8 °C. Protect fluorescent conjugates from light. Note: store BSA-free antibodies at -10 to -35 °C
Regulatory status	For research use only (RUO)
Antibody/conjugate formulation	Conjugates: 0.1 mg/mL in PBS/0.1% BSA/0.05% azide, HRP conjugates: 0.1 mg/mL in PBS/0.05% BSA, Purified: 0.2 mg/mL in PBS/0.05% BSA/0.05% azide, Purified, BSA-free: 1 mg/mL in PBS without azide
Validated in protein array	Monospecific
Shelf life	Guaranteed for at least 24 months from date of receipt when stored as recommended

Antibody # prefix	Conjugation	Ex/Em (nm)	Laser line	Detection channel	Dye Features
BNC04	CF®405S	404/431	405	DAPI (microscopy), AF405	<a href="#">CF®405S Features</a>
BNC88	CF®488A	490/515	488	GFP, FITC	<a href="#">CF®488A Features</a>
BNC68	CF®568	562/583	532, 561	RFP, TRITC	<a href="#">CF®568 Features</a>
BNC94	CF®594	593/614	561	Texas Red®	<a href="#">CF®594 Features</a>
BNC40	CF®640R	642/662	633-640	Cy®5	<a href="#">CF®640R Features</a>
BNC47	CF®647	650/665	633-640	Cy®5	<a href="#">CF®647 Features</a>
BNCB	Biotin	N/A	N/A	N/A	
BNUB	Purified	N/A	N/A	N/A	
BNUM	Purified, BSA-free	N/A	N/A	N/A	

Alexa Fluor, Pacific Blue, Pacific Orange, and Texas Red are trademarks or registered trademarks of Thermo Fisher Scientific; Cy is a registered trademark of Cytiva; IRDye, LI-COR, of LI-COR Bioscience.