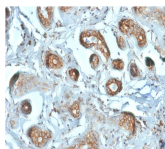


Laminin Receptor / RPSA Monoclonal Mouse Antibody (RPSA/2699)



Product Description

Laminins, a family of extracellular matrix glycoproteins, are the major non-collagenous constituent of basement membranes. They have been implicated in a wide variety of biological processes including cell adhesion, differentiation, migration, signaling, neurite outgrowth and metastasis. Many of the effects of laminin are mediated through interactions with cell surface receptors. These receptors include members of the integrin family, as well as non-integrin laminin-binding proteins. This gene encodes a high-affinity, non-integrin family, laminin receptor 1. Reportedly, level of laminin receptor transcript is higher in colon carcinoma tissue and lung cancer cell line than their normal counterparts. Also, there is a correlation between the upregulation of this polypeptide in cancer cells and their invasive and metastatic phenotype.

Primary antibodies are available purified, or with a selection of fluorescent CF® dyes and other labels. CF® dyes offer exceptional brightness and photostability. See the [CF® Dye Brochure](#) for more information. Note: Conjugates of blue fluorescent dyes like CF®405S and CF®405M are not recommended for detecting low abundance targets, because blue dyes have lower fluorescence and can give higher non-specific background than other dye colors.

Stock status: Because Biotium offers a large number of antibody and conjugation options, primary antibody conjugates may be made to order. Typical lead times are up to one week for CF® dye and biotin conjugates, and up to 2-3 weeks for fluorescent protein and enzyme conjugates. Please email order@biotium.com to inquire about stock status and lead times before placing your order.

Catalog number key for antibody number 2699, Anti-Laminin Receptor|RPSA (RPSA/2699)

Product attributes

Antibody number	#2699
Antibody reactivity (target)	Laminin Receptor, RPSA
Antibody type	Primary
Host species	Mouse
Clonality	Monoclonal
Clone	RPSA/2699
Isotype	IgG1, kappa
Molecular weight	37-67 kDa
Synonyms	34/67kDa Laminin Receptor; 37kDa Laminin Receptor precursor; 37/67kDa Laminin Receptor; 37LRP; 40S Ribosomal Protein SA; 67kDa Laminin Receptor; 67LR; Colon Carcinoma Laminin-binding Protein; LAMBR; Laminin receptor 1; Laminin-binding Protein precursor p40; LAMR1; LBP/p40; LRP/LR; Multidrug resistance-associated protein MGr1-Ag; NEM/1CHD4; Ribosomal Protein SA (RPSA)
Human gene symbol	RPSA
Entrez gene ID	3921
SwissProt	P08865
Unigene	449909
Immunogen	Recombinant full-length human RPSA protein
Verified antibody applications	Flow (verified), IF (verified)
Antibody target cellular localization	Plasma membrane, Nucleus & cytoplasm
Species reactivity	Human
Positive control	MCF-7, MDA-MB-453, SK-BR3, THP1, HL60, HeLa or HEK293 cells. Breast, Colon or Ovarian Carcinoma, Tonsil.
Shipping condition	Room temperature
Storage Conditions	Store at 2 to 8 °C. Protect fluorescent conjugates from light, Note: store BSA-free antibodies at -10 to -35 °C
Regulatory status	For research use only (RUO)
Antibody/conjugate formulation	Conjugates: 0.1 mg/mL in PBS/0.1% BSA/0.05% azide, HRP conjugates: 0.1 mg/mL in PBS/0.05% BSA, Purified: 0.2 mg/mL in PBS/0.05% BSA/0.05% azide, Purified, BSA-free: 1 mg/mL in PBS without azide
Validated in protein array	Monospecific
Shelf life	Guaranteed for at least 24 months from date of receipt when stored as recommended
Product origin	Product may contain either bovine serum albumin (BSA) from bovine serum (<i>Bos taurus</i>), or recombinant BSA produced in Chinese hamster ovary cells. Inquire for the specific lot.

Antibody # prefix	Conjugation	Ex/Em (nm)	Laser line	Detection channel	Dye Features
BNC04	CF®405S	404/431	405	DAPI (microscopy), AF405	CF®405S Features
BNC88	CF®488A	490/515	488	GFP, FITC	CF®488A Features
BNC68	CF®568	562/583	532, 561	RFP, TRITC	CF®568 Features
BNC94	CF®594	593/614	561	Texas Red®	CF®594 Features
BNC40	CF®640R	642/662	633-640	Cy®5	CF®640R Features
BNC47	CF®647	650/665	633-640	Cy®5	CF®647 Features
BNC74	CF®740	742/767	633-685	775/50	CF®740 Features
BNCB	Biotin	N/A	N/A	N/A	
BNUB	Purified	N/A	N/A	N/A	
BNUM	Purified, BSA-free	N/A	N/A	N/A	

Alexa Fluor, Pacific Blue, Pacific Orange, and Texas Red are trademarks or registered trademarks of Thermo Fisher Scientific; Cy is a registered trademark of Cytiva; IRDye, LI-COR, and Odyssey are registered trademarks of LI-COR Bioscience.

This datasheet was generated on November 26, 2024 at 03:57:46 AM. Visit product page to check for updated information before use.

Product link: <https://biotium.com/product/laminin-receptor-rpsa-monoclonal-mouse-antibody-rpsa-2699/>