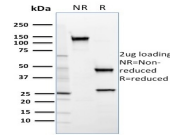


SREBP2 Monoclonal Mouse Antibody (SREBP2/1579)



Product Description

The low density lipoprotein (LDL) receptor mediates the endocytic uptake of cholesterol-carrying lipoproteins, thereby controlling cholesterol levels in cells and plasma. Transcription of the LDL receptor gene is controlled by a ten base pair sequence in the 5' flanking region, designated sterol regulatory element 1 (SRE-1). When cellular sterol stores are depleted, the element is activated, the gene is transcribed and the cellular uptake of LDL increases. A set of SREbinding proteins (SREBPs) have been identified, including two basic helixloop-helix-leucine zipper (bHLH-zip) transcription factors, designated SREBP-1 and SREBP-2. SREBP-1 and SREBP-2 have been shown to have the same specificity for SRE-1 in vitro and to activate the transcription of reporter genes containing SRE-1 in the same way.

Primary antibodies are available purified, or with a selection of fluorescent CF® dyes and other labels. CF® dyes offer exceptional brightness and photostability. See the [CF® Dye Brochure](#) for more information. Note: Conjugates of blue fluorescent dyes like CF®405S and CF®405M are not recommended for detecting low abundance targets, because blue dyes have lower fluorescence and can give higher non-specific background than other dye colors.

Stock status: Because Biotium offers a large number of antibody and conjugation options, primary antibody conjugates may be made to order. Typical lead times are up to one week for CF® dye and biotin conjugates, and up to 2-3 weeks for fluorescent protein and enzyme conjugates. Please email order@biotium.com to inquire about stock status and lead times before placing your order.

Product attributes

Antibody number	#1579
Antibody reactivity (target)	SREBP2
Antibody type	Primary
Host species	Mouse
Clonality	Monoclonal
Clone	SREBP2/1579
Isotype	IgG1, kappa
Molecular weight	68/125 kDa
Synonyms	A1608257; bHLHd2; Class D basic helix-loop-helix protein 2; OTTHUMP0000028740; Processed sterol regulatory element-binding protein 2; SRBP2_HUMAN; SREBF 2; Srebf2; SREBF2 protein; SREBP 2; SREBP2; SREBP2gc; sterol regulatory element binding factor 2; Sterol regulatory element binding transcription factor 2
Human gene symbol	SREBF2
Entrez gene ID	6721
SwissProt	Q12772
Unigene	443258
Immunogen	Recombinant full-length human SREBF2 protein
Antibody target cellular localization	Nucleus & cytoplasm
Species reactivity	Human
Antibody application notes	For coating for ELISA, order Ab without BSA. Higher concentration may be required for direct detection using primary antibody conjugates than for indirect detection with secondary antibody. Optimal dilution and staining procedure for a specific application should be determined by user. Recommended starting concentrations for titration are 1-2 ug/mL for most applications, or 1 ug/million cells/100 uL for flow cytometry
Positive control	Ubiquitous expression in adult and fetal tissues. Hep2 or HeLa cells.
Shipping condition	Room temperature
Storage Conditions	Store at 2 to 8 °C. Protect fluorescent conjugates from light. Note: store BSA-free antibodies at -10 to -35 °C
Regulatory status	For research use only (RUO)
Antibody/conjugate formulation	Conjugates: 0.1 mg/mL in PBS/0.1% BSA/0.05% azide, HRP conjugates: 0.1 mg/mL in PBS/0.05% BSA, Purified: 0.2 mg/mL in PBS/0.05% BSA/0.05% azide, Purified, BSA-free: 1 mg/mL in PBS without azide
Shelf life	Guaranteed for at least 24 months from date of receipt when stored as recommended

Antibody # prefix	Conjugation	Ex/Em (nm)	Laser line	Detection channel	Dye Features
BNC04	CF®405S	404/431	405	DAPI (microscopy), AF405	CF®405S Features
BNC88	CF®488A	490/515	488	GFP, FITC	CF®488A Features
BNC68	CF®568	562/583	532, 561	RFP, TRITC	CF®568 Features
BNC94	CF®594	593/614	561	Texas Red®	CF®594 Features
BNC40	CF®640R	642/662	633-640	Cy®5	CF®640R Features
BNC47	CF®647	650/665	633-640	Cy®5	CF®647 Features
BNCB	Biotin	N/A	N/A	N/A	
BNUB	Purified	N/A	N/A	N/A	
BNUM	Purified, BSA-free	N/A	N/A	N/A	

Alexa Fluor, Pacific Blue, Pacific Orange, and Texas Red are trademarks or registered trademarks of Thermo Fisher Scientific; Cy is a registered trademark of Cytiva; IRDye, LI-COR, or LI-COR Bioscience.