

DASPEI

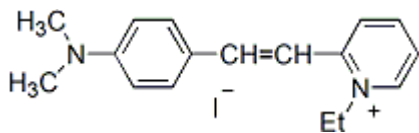
DASPEI (2-(4-(Dimethylamino)styryl)-N-ethylpyridinium iodide) is used to stain mitochondria in live cells.



Product Description

DASPEI (2-(4-(Dimethylamino)styryl)-N-ethylpyridinium iodide) is used to stain mitochondria in live cells.

- $\lambda_{Ex}/\lambda_{Em} = 461/589$ nm (MeOH)
- Store at 4 °C and protect from light, especially in solution
- C₁₇H₂₁IN₂
- MW: 380
- [3785-01-1]



Product attributes

CAS number	3785-01-1
Probe cellular localization	Mitochondria
For live or fixed cells	For live/intact cells
Assay type/options	No-wash staining, Real-time imaging
Cell permeability	Membrane permeant
Apoptosis/viability marker	Mitochondrial potential
Colors	Red
Excitation/Emission	461/589 nm

References

1. Biochem Biophys Res Comm 261, 452 (1999).
2. J Exp Biol 202, 3485 (1999).
3. J Biol Chem 272, 21964 (1997).
4. Biochim Biophys Acta 1278, 205 (1996).
5. Microscopy Res Technique 33, 496 (1996).

This datasheet was generated on June 13, 2026 at 08:49:03 PM. Visit product page to check for updated information before use.
 Product link: <https://biotium.com/product/daspei-2-4-dimethylaminostyryl-n-ethylpyridinium-iodide/>