

## CPM

CPM is a widely used blue fluorescent thiol-reactive dye that is essentially nonfluorescent until it reacts with thiols, making it possible to quantify thiols without a separation step.



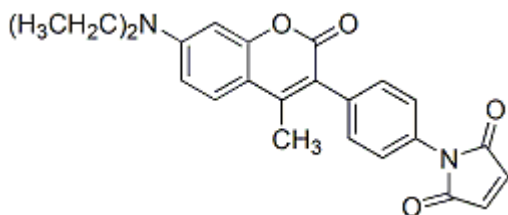
### Product attributes

Excitation/Emission	384/469 nm (reaction product)
CAS number	76877-33-3

## Product Description

CPM (full name: 7-diethylamino-3-(4'-maleimidylphenyl)-4-methylcoumarin) is probably the most widely used blue fluorescent thiol-reactive dye. This maleimide derivative of coumarin is essentially nonfluorescent until it reacts with thiols, making it possible to quantify thiols without a separation step. CPM is a good energy acceptor from tryptophan and a good energy donor to fluorescein. Please also see our [MTS products](#).

- Yellow solid soluble in anhydrous DMSO
- MW: 402.45
- [76877-33-3]



## References

1. Biochemistry 22, 5369 (1983).
2. Anal Lett 18, 393 (1985).
3. J Biol Chem 265, 14796 (1990).

This datasheet was generated on June 5, 2026 at 06:46:39 PM. Visit product page to check for updated information before use.  
Product link: <https://biotium.com/product/cpm/>