

Fluorescein-5-maleimide

Fluorescein-5-maleimide is the most widely used green fluorescent thiol-reactive dye. The reaction requires very mild conditions and is highly specific.



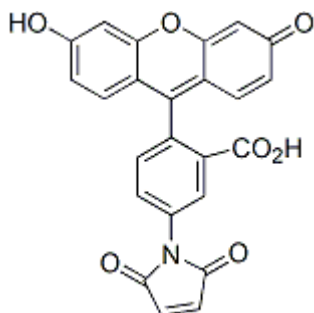
Product attributes

Excitation/Emission	492/515 nm (pH 9)
---------------------	-------------------

Product Description

Fluorescein-5-maleimide is the most widely used green fluorescent thiol-reactive dye. The reaction requires very mild conditions and is highly specific.

- $\lambda_{Ex}/\lambda_{Em}$ = 492/515 nm (pH 9)
- ϵ = 83,000
- Yellow solid soluble in DMF
- Store at -20 °C and protect from light
- MW: 427



References

1. Anal Lett 18, 393 (1985).
2. Biochemistry 30, 2113 (1991).

This datasheet was generated on January 2, 2026 at 11:02:56 AM. Visit product page to check for updated information before use.
Product link: <https://biotium.com/product/fluorescein-5-maleimide/>