

X-GlcU, Na

X-GlcU, Na (5-Bromo-4-chloro-3-indolyl- β -D-glucuronide, sodium salt), also known as X-GlcA, Na, is similar to X-GlcU, CHA, but has better water solubility.



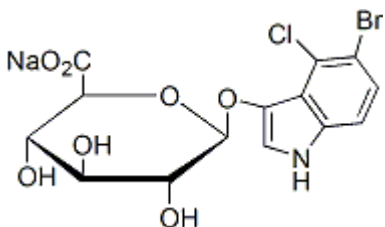
Product attributes

CAS number	12954-41-9
------------	------------

Product Description

X-GlcU, Na (5-Bromo-4-chloro-3-indolyl- β -D-glucuronide, sodium salt), also known as X-GlcA, Na, is similar to X-GlcU, CHA (<https://biotium.com/product/x-glcu-cha-also-called-bcig-or-5-bromo-4-chloro-3-indolyl-b-dglucuronidecyclohexylammonium-salt/>>10016), but has better water solubility.

- White solid soluble in water or DMSO
- Store desiccated at 4 °C and protect from light
- C₁₄H₁₂BrClNaO₇
- MW: 444.6
- [12954-41-9]



References

1. J Food Protect 53(6), 508 (1990).
2. Appl Environ Microbiol 54,1874 (1988).
3. J Clin Microbiol 27(4), 778 (1989).
4. Plant cell Reports 13(1), 17 (1993).
5. J Am Soc Horticul Sci 115(4), 686 (1990).

This datasheet was generated on June 23, 2026 at 05:12:14 PM. Visit product page to check for updated information before use.
Product link: <https://biotium.com/product/x-glcu-na-x-glca-na-5-bromo-4-chloro-3-indolyl-b-d-glucuronide-sodium-salt/>