

Rose- β -D-GlcU,CHA

Rose- β -D-GlcU (6-Chloro-3-indolyl- β -D-glucuronide,cyclohexylammonium salt), also known as Salmon- β -D-GlcUA, is similar to X-GlcU, but the product of the substrate is a rose-colored (λ_{\max} ~ 540 nm) precipitate, which is easier to detect against the background of plant cells.



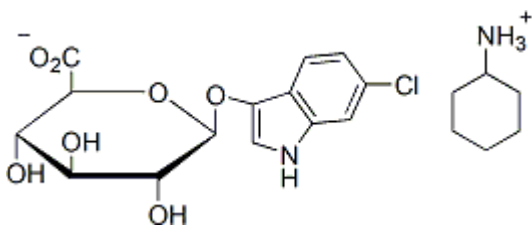
Product attributes

CAS number	138182-20-4
------------	-------------

Product Description

Rose- β -D-GlcU (6-Chloro-3-indolyl- β -D-glucuronide,cyclohexylammonium salt), also known as Salmon- β -D-GlcUA, is similar to X-GlcU, but the product of the substrate is a rose-colored (λ_{\max} ~ 540 nm) precipitate, which is easier to detect against the background of plant cells.

- White solid soluble in H₂O or DMSO
- Store desiccated at 4 °C and protect from light
- C₂₀H₂₇ClN₂O₇
- MW: 442.9
- [138182-20-4]



References

1. J Food Protect 53(6), 508 (1990).
2. Appl Environ Microbiol 54,1874 (1988).
3. J Clin Microbiol 27(4), 778 (1989).
4. Plant cell Reports 13(1), 17 (1993).
5. J Am Soc Horticult Sci 115(4), 686 (1990).

This datasheet was generated on June 17, 2026 at 03:24:56 AM. Visit product page to check for updated information before use.

Product link: <https://biotium.com/product/rose-b-d-glcucha-salmon-b-d-glcua-6-chloro-3-indolyl-b-dglucuronidecyclohexylammonium-salt/>