

Cyanine 644-cAMP

A fluorescently labeled cAMP analog that can be used to probe cAMP receptors.



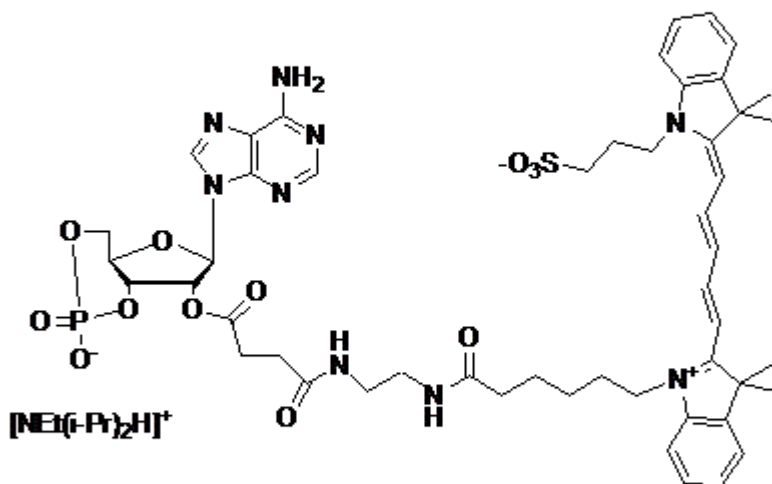
Product attributes

For live or fixed cells	For live/intact cells
Colors	Far-red
Excitation/Emission	644/670 nm
Molecular weight	1043.11

Product Description

Cyanine 644-cAMP is a fluorescently labeled cAMP analog that can be used to probe cAMP receptors. Single molecules of fluorescently labeled cAMP have been imaged as the probe binds to the receptor on the surface of *Dictyostelium* cells (1).

- Dark Blue solid soluble in H₂O, DMF, or DMSO
- Store desiccated at -20°C and protect from light



References

1. Science (2001), <https://doi.org/10.1126/science.1063951>

This datasheet was generated on January 30, 2026 at 11:43:53 PM. Visit product page to check for updated information before use.
Product link: <https://biotium.com/product/cyanine-644-camp/>