

Indo-1, Pentapotassium Salt

Membrane-impermeant calcium indicator that can be loaded into cells via microinjection or scrape loading.



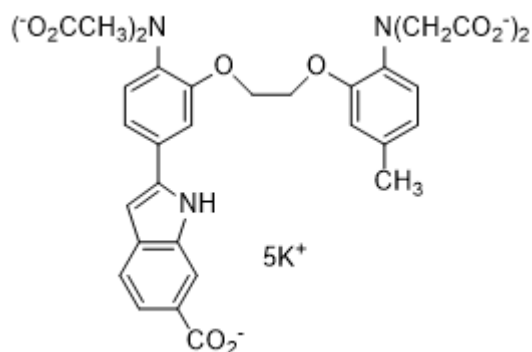
Product attributes

CAS number	132319-56-3
Cell permeability	Membrane impermeant
Indicator type	Ratiometric
Excitation/Emission	349/482 nm (no Ca ²⁺); 331/398 nm (high Ca ²⁺)

Product Description

Membrane-impermeant calcium indicator that can be loaded into cells via microinjection or scrape loading. We also offer membrane-permeant [Indo-1, AM Ester](#).

- K_d : 250 nM
- $\lambda_{Ex}/\lambda_{Em}$ (no Ca²⁺) = 349/482 nm
- $\lambda_{Ex}/\lambda_{Em}$ (high Ca²⁺) = 331/398 nm
- ϵ (349 nm, no Ca²⁺) = 33,000 M⁻¹cm⁻¹
- Light yellow solid soluble in DMSO
- Store at 4 °C and protect from light, especially in solution
- C₃₂H₂₆K₅N₃O₁₂
- MW: 840
- [132319-56-3]



BAPTA-based ion indicators like Indo-1 have been shown to be fixable in situ by [EDC/EDAC \(cat# 59002\)](#). The fixation of indicator dyes is useful for downstream immunofluorescence and IHC studies ([Cell Calcium 1997, 21\(3\), 175](#)).

As the indicator does not covalently bind to cellular components, it may be actively effluxed from the cell by organic anion transporters. The rate of efflux increases with temperature, and may vary between cell types, resulting in variable retention times of a few minutes to hours. Experiments using indicators in cells usually are performed within one or two hours of loading, but it may be possible to re-load cells with indicator if needed. The organic anion transporter inhibitor [Probenecid \(#50027\)](#) can be used to slow the rate of indicator efflux from cells.

References

1. Methods Cell Biol, 99, 113, (2021), [DOI: 10.1016/B978-0-12-374841-6.00005-0](https://doi.org/10.1016/B978-0-12-374841-6.00005-0)