

## 5-(and-6)-Carboxyfluorescein

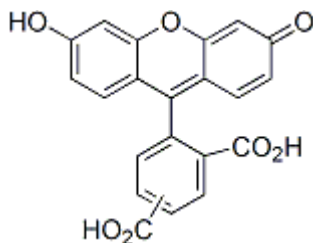
5-(and-6)-FAM (full name: 5-(and-6)-Carboxyfluorescein mixed isomer) has a pKa of 6.5 and can be used as a pH indicator.



### Product Description

5-(and-6)-FAM (full name: 5-(and-6)-Carboxyfluorescein mixed isomer) has a pKa of 6.5 and can be used as a pH indicator. Its excitation spectrum and fluorescence response to pH are similar to those of BCECF. Carboxyfluorescein can also be used as a tracer dye. The dye is membrane-impermeant and can be loaded into cells by microinjection or scrape loading.

- $\lambda_{Ex}/\lambda_{Em}$  (pH 9) = 492/514 nm
- $\epsilon$  (pH 9) = 82,000
- Yellow orange solid soluble in pH>6 water
- Store at 4 °C and protect from light, especially in solution
- $C_{21}H_{12}O_7$
- MW: 376
- [72088-94-9]



### Product attributes

CAS number	72088-94-9
Cell permeability	Membrane impermeant
Probe cellular localization	Fluid phase tracer
pKa	pKa 6.5
Indicator type	Ratiometric
Colors	Green
Excitation/Emission	492/514 nm

### References

1. Meth Enzymol 128, 65 (1986).

This datasheet was generated on June 11, 2026 at 01:47:37 PM. Visit product page to check for updated information before use.  
 Product link: <https://biotium.com/product/5-and-6-carboxyfluorescein-5-and-6-fam-mixed-isomer/>