

## 5-Carboxy-2',7'-dichlorosulfonefluorescein

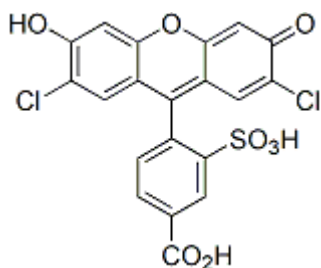
The pKa of 5-carboxy-2',7'-dichlorosulfonefluorescein is near 4 and thus the dye is potentially an excellent pH indicator for acidic organelles.



### Product Description

The pKa of 5-carboxy-2',7'-dichlorosulfonefluorescein is near 4 and thus the dye is potentially an excellent pH indicator for acidic organelles.

- $\lambda_{Ex}/\lambda_{Em}$ = 509/532 nm (pH 9)
- $\epsilon$  = 92,000
- Yellow solid soluble in DMSO, DMF or a buffer (pH >6)
- Store at 4 °C and protect from light
- $C_{20}H_{10}Cl_2O_8S$
- MW: 481.26



### Product attributes

Cell permeability	Membrane impermeant
Probe cellular localization	Fluid phase tracer
pKa	pKa 4.0
Indicator type	Ratiometric
Colors	Green
Excitation/Emission	509/532 nm (pH 9)