

SGC5

SGC5 is a coumarin styryl dye that binds to membranes in a manner similar to the FM® dyes. It becomes highly fluorescent upon insertion into lipid bilayers.



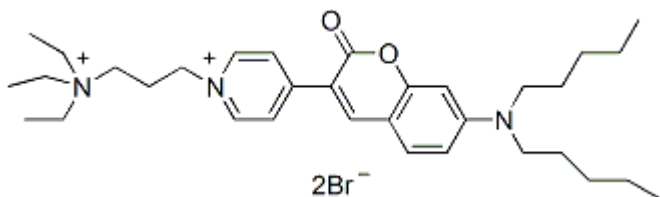
Product attributes

Probe cellular localization	Membrane/vesicular
For live or fixed cells	For live/intact cells
Assay type/options	Real-time imaging
Excitation/Emission	484/563 nm

Product Description

SGC5 is a coumarin styryl dye that binds to membranes in a manner similar to the FM® dyes. It becomes highly fluorescent upon insertion into lipid bilayers.

- $\lambda_{Ex}/\lambda_{Em}$: 484/563 nm (in MeOH)
- Dark Orange solid soluble in water
- MW: 682



FM is a registered trademark of Thermo Fisher Scientific.

References

1. Biophysical J, 97, 101 (2009), [DOI: 10.1016/j.bpj.2009.04.028](https://doi.org/10.1016/j.bpj.2009.04.028)
2. Biochemistry, 50, 35 (2011), [DOI: 10.1021/bi2006288](https://doi.org/10.1021/bi2006288)

This datasheet was generated on June 13, 2026 at 05:16:31 PM. Visit product page to check for updated information before use.
Product link: <https://biotium.com/product/sgc5/>