

Lucifer Yellow CH, lithium salt

Lucifer Yellow CH lithium salt (LY CH lithium salt) is a widely used polar molecular tracer for studying neuronal morphology. The fluorescent molecule contains a carbohydrazide that allow the molecule to be aldehyde-fixable.



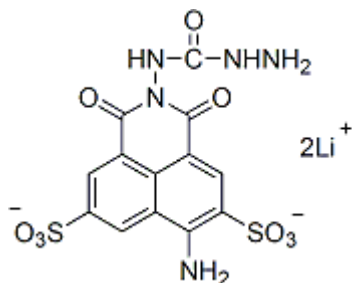
Product attributes

CAS number	67769-47-5
Probe cellular localization	Fluid phase tracer
Cell permeability	Membrane impermeant
Colors	Green
Excitation/Emission	428/536 nm

Product Description

Lucifer Yellow CH lithium salt (LY CH lithium salt) is a widely used polar molecular tracer for studying neuronal morphology. The fluorescent molecule contains a carbohydrazide that allow the molecule to be aldehyde-fixable.

- $\lambda_{Ex}/\lambda_{Em}$ = 428/536 nm
- Yellow solid soluble in water
- Store at 4 °C and protect from light
- $C_{13}H_9Li_2N_5O_9S_2$
- MW: 457
- [67769-47-5]



References

1. Nature 292, 17 (1981).
2. Cell 14, 741 (1978).

This datasheet was generated on January 16, 2026 at 03:28:31 PM. Visit product page to check for updated information before use.
Product link: <https://biotium.com/product/lucifer-yellow-ch-lithium-salt/>