

## Lucifer Yellow CH, potassium salt

Lucifer Yellow CH potassium salt (LY CH potassium salt) is a widely used polar molecular tracer for studying neuronal morphology. The fluorescent molecule contains a carbohydrazide that allow the molecule to be aldehyde-fixable.



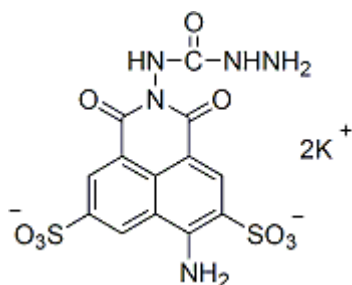
### Product attributes

CAS number	71206-95-6
Probe cellular localization	Fluid phase tracer
Cell permeability	Membrane impermeant
Colors	Green
Excitation/Emission	428/536 nm

## Product Description

Lucifer Yellow CH potassium salt (LY CH potassium salt) is a widely used polar molecular tracer for studying neuronal morphology. The fluorescent molecule contains a carbohydrazide that allow the molecule to be aldehyde-fixable.

- $\lambda_{Ex}/\lambda_{Em} = 428/536$  nm
- Yellow solid soluble in water
- Store at 4 °C and protect from light
- $C_{13}H_9K_2N_5O_9S_2$
- MW: 522
- [71206-95-6]



## References

1. Nature 292, 17 (1981).
2. Cell 14, 741 (1978).

This datasheet was generated on June 6, 2026 at 02:54:49 AM. Visit product page to check for updated information before use.  
 Product link: <https://biotium.com/product/lucifer-yellow-ch-potassium-salt/>