

## Lucifer Yellow Cadaverine

Like Lucifer Yellow CH, Lucifer Yellow Cadaverine can be used as a fixable fluorescent tracer. In addition, the dye can be used to conjugate to carboxylic acid groups.



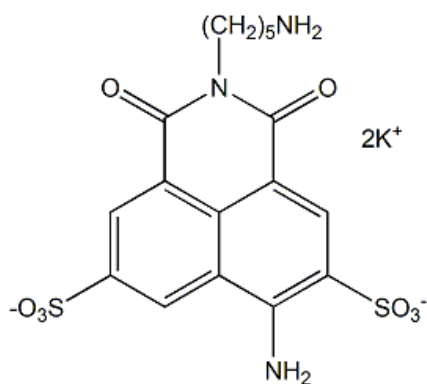
### Product attributes

CAS number	149733-79-9
Probe cellular localization	Fluid phase tracer
Cell permeability	Membrane impermeant
Colors	Green
Excitation/Emission	428/536 nm

## Product Description

Like Lucifer Yellow CH, Lucifer Yellow Cadaverine can be used as a fixable fluorescent tracer. In addition, the dye can be used to conjugate to carboxylic acid groups.

- $\lambda_{Ex}/\lambda_{Em}$ = 428/536 nm
- Yellow solid soluble in water
- Store at 4°C and protect from light
- $C_{17}H_{17}K_2N_3O_8S_2$
- MW: 534



## References

1. Anal Biochem 211, 210 (1993).