

Sulforhodamine 101

Sulforhodamine 101 has a longer absorption wavelength than does sulforhodamine B. Like sulforhodamine B and G, in addition to their potential use in cancer drug screening, these fluorescent dyes have been primarily used as polar tracers for the studies of neuronal cell morphology and cell-cell communication.



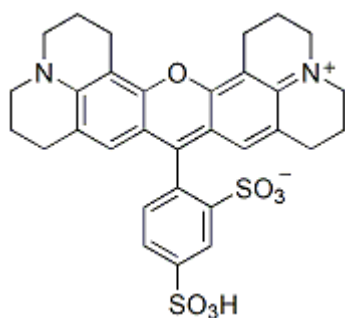
Product attributes

CAS number	60311-02-6
Probe cellular localization	Fluid phase tracer
Cell permeability	Membrane impermeant
Colors	Red
Excitation/Emission	586/605 nm

Product Description

Sulforhodamine 101 has a longer absorption wavelength than does sulforhodamine B. Like sulforhodamine B and G, in addition to their potential use in cancer drug screening, these fluorescent dyes have been primarily used as polar tracers for the studies of neuronal cell morphology and cell-cell communication. See [80100](#) for more information.

- $\lambda_{Ex}/\lambda_{Em}$ = 586/605 nm
- Red solid soluble in water
- Store at room temperature
- $C_{31}H_{30}N_2O_7S_2$
- MW: 607
- [60311-02-6]



This datasheet was generated on January 1, 2026 at 01:12:26 AM. Visit product page to check for updated information before use.
Product link: <https://biotium.com/product/sulforhodamine-101/>