

## FAM SE, 6-isomer

6-FAM, SE (full name: 6-Carboxyfluorescein, succinimidyl ester, single isomer) is the amine-reactive form of 6-carboxyfluorescein single isomer.



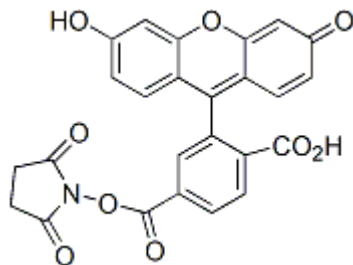
### Product attributes

Excitation/Emission	495/519 nm
---------------------	------------

## Product Description

6-FAM, SE (full name: 6-Carboxyfluorescein, succinimidyl ester, single isomer) is the amine-reactive form of 6-carboxyfluorescein single isomer.

- $\lambda_{Ex}/\lambda_{Em}$  (pH 9) = 495/519 nm
- Yellow-orange solid soluble in DMF or DMSO
- Store at -20 °C and protect from light
- $C_{25}H_{15}NO_9$
- MW: 473.4



## References

1. Bioconjugate Chem 6, 447 (1995).

This datasheet was generated on December 6, 2025 at 11:07:14 AM. Visit product page to check for updated information before use.  
Product link: <https://biotium.com/product/6-carboxyfluorescein-succinimidyl-ester-6-fam-se-single-isomer/>