

NBD-Ethylenediamine

The fluorescence of NBD is highly dependent on the environment; it is virtually nonfluorescent in water but becomes strongly green fluorescent in hydrophobic media. NBD-ethylenediamine can be readily coupled to activated carboxy groups or sulfonyl chlorides.



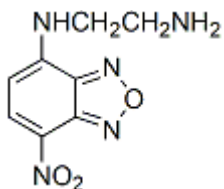
Product attributes

| | |
|---------------------|------------|
| Excitation/Emission | 466/535 nm |
|---------------------|------------|

Product Description

The fluorescence of NBD is highly dependent on the environment; it is virtually nonfluorescent in water but becomes strongly green fluorescent in hydrophobic media. NBD-ethylenediamine can be readily coupled to activated carboxy groups or sulfonyl chlorides.

- $\lambda_{Ex}/\lambda_{Em}$ (MeOH) = 466/535 nm
- Yellow solid soluble in DMSO or DMF
- Store at 4 °C and protect from light
- $C_8H_9N_5O_3$
- MW: 223.19



This datasheet was generated on June 3, 2026 at 11:01:11 PM. Visit product page to check for updated information before use.

Product link: <https://biotium.com/product/nbd-ethylenediamine/>