

Biotin SE

Biotin SE (Biotin, succinimidyl ester) is readily coupled to a primary or secondary amine under mild conditions.

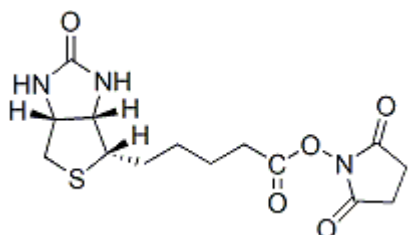


Product attributes

Product Description

Biotin SE (Biotin, succinimidyl ester) is readily coupled to a primary or secondary amine under mild conditions.

- White solid soluble in DMSO and moderately soluble in DMF
- Store at -20 °C
- $C_{14}H_{19}N_3O_5S$
- MW: 341.38



References

1. Bioconjugate Chem 8, 552 (1997).
2. Bioconjugate Chem 8, 545 (1997).
3. J Immunol 159, 5871 (1997).

This datasheet was generated on December 22, 2025 at 11:57:10 AM. Visit product page to check for updated information before use.

Product link: <https://biotium.com/product/biotinsuccinimidyl-ester-biotin-se/>