

Sulforhodamine 101 (Texas Red®) Cadaverine

Sulforhodamine 101 cadaverine can be coupled to activated carboxy groups or sulfonyl chlorides.



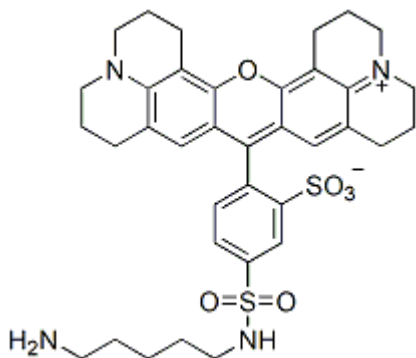
Product attributes

Excitation/Emission	583/603 nm
---------------------	------------

Product Description

Sulforhodamine 101 cadaverine can be coupled to activated carboxy groups or sulfonyl chlorides.

- $\lambda_{Ex}/\lambda_{Em}$ (MeOH) = 583/603 nm
- Dark purple solid soluble in DMSO or DMF
- Store at 4°C and protect from light
- $C_{36}H_{42}N_4O_6S_2$
- MW: 690.87



This datasheet was generated on June 22, 2026 at 03:30:38 PM. Visit product page to check for updated information before use.
Product link: <https://biotium.com/product/sulforhodamine-101-cadaverine-texas-redtm-cadaverine/>