

MTS-Sulforhodamine 101 (Texas Red®)

MTS-sulforhodamine 101 is a fast-reacting and highly selective thiol-reactive rhodamine dye.



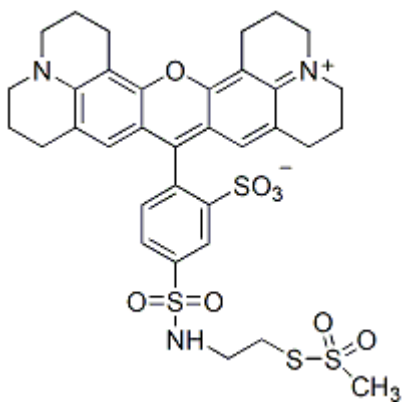
Product attributes

Excitation/Emission	583/603 nm
---------------------	------------

Product Description

MTS-sulforhodamine 101 is a fast-reacting and highly selective thiol-reactive rhodamine dye.

- $\lambda_{Ex}/\lambda_{Em}$ (MeOH) = 583/603 nm
- Dark Red solid soluble in DMF or DMSO
- Store at -20 °C and protect from light
- $C_{34}H_{37}N_3O_8S_4$
- MW: 743.94



This datasheet was generated on June 4, 2026 at 12:37:20 AM. Visit product page to check for updated information before use.
 Product link: <https://biotium.com/product/mts-sulforhodamine-101-mts-texas-red/>