

## Carboxyrhodamine 110 succinimidyl ester, 5-isomer

Amine-reactive form of single isomer carboxyrhodamine 110, useful in DNA sequencing. For many single-dye-labeling applications, the dye is preferred over other green fluorescent dyes including fluorescein and Alexa Fluor® 488 because of its exceptional photostability and fluorescence insensitivity to pH.



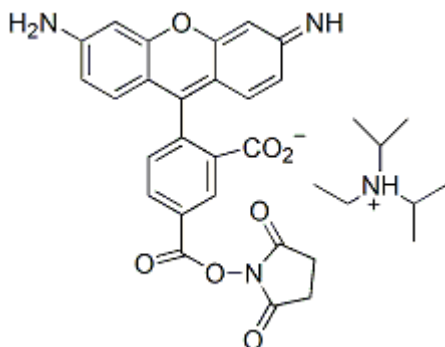
### Product attributes

Excitation/Emission	502/524 nm
---------------------	------------

### Product Description

Amine-reactive form of single isomer carboxyrhodamine 110, useful in DNA sequencing. For many single-dye-labeling applications, the dye is preferred over other green fluorescent dyes including fluorescein and Alexa Fluor® 488 because of its exceptional photostability and fluorescence insensitivity to pH between 4 and 9.

- $\lambda_{Ex}/\lambda_{Em}$  (MeOH) = 502/524 nm
- Orange red solid soluble in DMF or DMSO
- Store desiccated at -20 °C and protect from light
- C<sub>33</sub>H<sub>36</sub>N<sub>4</sub>O<sub>7</sub>
- MW: 600.67



Alexa Fluor is a registered trademark of Thermo Fisher Scientific.