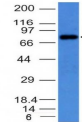


Human IgM Immunoglobulin Monoclonal Mouse Antibody (IM373)

Recognizes a protein of 75 kDa, identified as mu heavy chain of human immunoglobulins.



Product Description

Recognizes a protein of 75 kDa, identified as mu heavy chain of human immunoglobulins. It does not cross-react with alpha (IgA), gamma (IgG), epsilon (IgE), or delta (IgD), heavy chains, T-cells, monocytes, granulocytes, or erythrocytes. This MAb is useful in the identification of leukemias, plasmacytomas, and certain non-Hodgkin's lymphomas. The most common feature of these malignancies is the restricted expression of a single heavy chain class. Demonstration of clonality in lymphoid infiltrates indicates that the infiltrate is clonal and therefore malignant. Primary antibodies are available purified, or with a selection of fluorescent CF® dyes and other labels. CF® dyes offer exceptional brightness and photostability. See the [CF® Dye Brochure](#) for more information. Note: Conjugates of blue fluorescent dyes like CF®405S and CF®405M are not recommended for detecting low abundance targets, because blue dyes have lower fluorescence and can give higher non-specific background than other dye colors.

Stock status: Because Biotium offers a large number of antibody and conjugation options, primary antibody conjugates may be made to order. Typical lead times are up to one week for CF® dye and biotin conjugates, and up to 2-3 weeks for fluorescent protein and enzyme conjugates. Please email order@biotium.com to inquire about stock status and lead times before placing your order. **Catalog number key for antibody number 0373, Anti-Human IgM Immunoglobulin (IM373)**

Antibody #	prefix	Conjugation	Ex/Em	Concentration	Storage Buffer
BNC04	CF®405S		404/431 nm	0.1 mg/mL	PBS, 0.1% BSA, 0.05% azide
BNC05	CF®405M		408/452 nm	0.1 mg/mL	PBS, 0.1% BSA, 0.05% azide
BNC88	CF®488A		490/515 nm	0.1 mg/mL	PBS, 0.1% BSA, 0.05% azide
BNC43	CF®543		541/560 nm	0.1 mg/mL	PBS, 0.1% BSA, 0.05% azide
BNC55	CF®555		555/565 nm	0.1 mg/mL	PBS, 0.1% BSA, 0.05% azide
BNC68	CF®568		562/583 nm	0.1 mg/mL	PBS, 0.1% BSA, 0.05% azide
BNC94	CF®594		593/614 nm	0.1 mg/mL	PBS, 0.1% BSA, 0.05% azide
BNC40	CF®640R		642/662 nm	0.1 mg/mL	PBS, 0.1% BSA, 0.05% azide
BNC47	CF®647		650/665 nm	0.1 mg/mL	PBS, 0.1% BSA, 0.05% azide
BNC61	CF®660R		663/682 nm	0.1 mg/mL	PBS, 0.1% BSA, 0.05% azide
BNC80	CF®680		681/698 nm	0.1 mg/mL	PBS, 0.1% BSA, 0.05% azide
BNC81	CF®680R		680/701 nm	0.1 mg/mL	PBS, 0.1% BSA, 0.05% azide
BNC70	CF®770		770/797 nm	0.1 mg/mL	PBS, 0.1% BSA, 0.05% azide
BNCR	R-PE (PE)		496, 546, 565/578 nm	0.1 mg/mL	PBS, 0.1% BSA, 0.05% azide
BNCA	APC		650/660 nm	0.1 mg/mL	PBS, 0.1% BSA, 0.05% azide
BNCP	PerCP		482/677 nm	0.1 mg/mL	PBS, 0.1% BSA, 0.05% azide
BNCB	Biotin	N/A		0.1 mg/mL	PBS, 0.1% BSA, 0.05% azide
BNCAP	Alkaline Phosphatase	N/A		0.1 mg/mL	PBS, 0.1% BSA, 0.05% azide
BNCH	Horseradish Peroxidase	N/A		0.1 mg/mL	PBS, 0.05% BSA, no azide
BNUB	Purified, with BSA	N/A		0.2 mg/mL	PBS, 0.05% BSA, 0.05% azide
BNUM	Purified, BSA-free	N/A		1 mg/mL	PBS, no BSA, no azide

References

Baryshnikov Alu. Gematol Transfuziol. 1990;35(8):4-7. |

Product attributes

Antibody number	0373
Reactivity (target)	Human IgM
Antibody type	Anti-Human Immunoglobulin, Primary
Host species	Mouse
Clonality	Monoclonal
Clone	IM373
Isotype	IgG2b, kappa
Molecular weight	50-75 kDa
Synonyms	AGM1; IGHM; Constant Region of Heavy Chain of IgM; Ig Mu Chain C Region
Human gene symbol	IGHM
Entrez gene ID	3507
SwissProt	P01871 & P20769
Unigene	510635
Immunogen	Recombinant full-length heavy chain of human IgM
Cellular localization	Cytoplasmic, Membrane/cell surface, Secreted (extracellular)
Species reactivity	Human
Applications	Immunofluorescence, Immunohistology (formalin), Flow cytometry, Western
Application notes	Immunohistology formalin-fixed 0.5-1 ug/mL, Staining of formalin-fixed tissues requires boiling tissue sections in 10 mM citrate buffer, pH 6.0, for 10-20 min followed by cooling at RT for 20 minutes, Immunofluorescence 0.5-1 ug/mL, Flow Cytometry 0.5-1 ug/million cells/0.1 mL, Western blotting 0.5-1 ug/mL, Optimal dilution for a specific application should be determined by user
Positive control	293T, Raji or hPBL cells. Tonsil or Spleen
Shipping condition	Room temperature
Storage Conditions	Store at 2 to 8 °C, Protect fluorescent conjugates from light, Note: store BSA-free antibodies at -10 to -35 °C
Shelf life	Guaranteed for at least 24 months from date of receipt when stored as recommended
Regulatory status	For research use only (RUO)
Research areas	Immunology
Cell/tissue expression	B-cells
Tumor expression	Leukemia/lymphoma