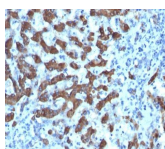


Hepatocyte Specific Antigen Monoclonal Mouse Antibody (CPS1/1022)



Product Description

This MAbs recognizes a protein of 165 kDa, identified as carbamoyl phosphate synthetase 1 (CPS1). This mitochondrial enzyme catalyzes synthesis of carbamoyl phosphate from ammonia and bicarbonate. This reaction is the first committed step of the urea cycle, which is important in the removal of excess urea from cells. Deficiency of CPS1 is an autosomal recessive disorder that causes hyperammonemia. CPS1 is a hepatocyte specific protein that localizes to the mitochondria of hepatocytes. It is a sensitive marker for distinguishing hepatocellular carcinomas (HCC) from other metastatic carcinomas as well as cholangio-carcinomas. HCCs occur primarily in the stomach, but they are also found in many other organs. CPS1 may also be a useful marker for intestinal metaplasia. Reportedly, strong expression of CPS1 correlates with smaller tumor size and longer patient survival. Occasionally, CPS1 is also found in gastric carcinomas as well as in a few other non-hepatic tumors.

Primary antibodies are available purified, or with a selection of fluorescent CF® dyes and other labels. CF® dyes offer exceptional brightness and photostability. See the [CF® Dye Brochure](#) for more information. Note: Conjugates of blue fluorescent dyes like CF®405S and CF®405M are not recommended for detecting low abundance targets, because blue dyes have lower fluorescence and can give higher non-specific background than other dye colors.

Stock status: Because Biotium offers a large number of antibody and conjugation options, primary antibody conjugates may be made to order. Typical lead times are up to one week for CF® dye and biotin conjugates, and up to 2-3 weeks for fluorescent protein and enzyme conjugates. Please email order@biotium.com to inquire about stock status and lead times before placing your order.

Catalog number key for antibody number 1022, Anti-Hepatocyte Specific Antigen (CPS1/1022)

Call us : [800-304-5357](tel:800-304-5357)

Product attributes

Antibody number	#1022
Antibody reactivity (target)	Hepatocyte Specific Antigen
Antibody type	Primary
Host species	Mouse
Clonality	Monoclonal
Clone	CPS1/1022
Isotype	IgG1
Molecular weight	~165 kDa
Synonyms	Carbamoyl-phosphate synthetase 1 (CPS1); Carbamoylphosphate synthetase 1; CPSase 1; CPSASE1
Human gene symbol	CPS1
Entrez gene ID	1373
SwissProt	P31327
Unigene	149252
Immunogen	Recombinant human CPS1 protein
Antibody target cellular localization	Cytoplasmic
Verified antibody applications	IHC (FFPE) (verified)
Species reactivity	Dog, Human
Antibody application notes	Higher concentration may be required for direct detection using primary antibody conjugates than for indirect detection with secondary antibody. Immunohistology formalin-fixed 0.25-0.5 ug/mL. Staining of formalin-fixed tissues requires boiling tissue sections in 10 mM Tris with 1 mM EDTA, pH 9.0, for 10-20 min followed by cooling at RT for 20 minutes. Immunofluorescence 0.5-1.0 ug/mL. Optimal dilution for a specific application should be determined by user
Positive control	HeLa cells. Liver or Hepatocellular Carcinoma (HCC)
Shipping condition	Room temperature
Storage Conditions	Store at 2 to 8 °C. Protect fluorescent conjugates from light. Note: store BSA-free antibodies at -10 to -35 °C
Shelf life	Guaranteed for at least 24 months from date of receipt when stored as recommended
Regulatory status	For research use only (RUO)
Antibody/conjugate formulation	Conjugates: 0.1 mg/mL in PBS/0.1% BSA/0.05% azide, HRP conjugates: 0.1 mg/mL in PBS/0.05% BSA, Purified: 0.2 mg/mL in PBS/0.05% BSA/0.05% azide, Purified, BSA-free: 1 mg/mL in PBS without azide
Antibody research areas	Cancer
Product origin	Product may contain either bovine serum albumin (BSA) from bovine serum (Bos taurus), or recombinant BSA produced in Chinese hamster ovary cells. Inquire for the specific lot.
Cell/tissue expression	Hepatocytes
Tumor expression	Hepatocellular carcinoma

Antibody # prefix	Conjugation	Ex/Em (nm)	Laser line	Detection channel	Dye Features
BNC04	CF®405S	404/431	405	DAPI (microscopy), AF405	CF®405S Features
BNC88	CF®488A	490/515	488	GFP, FITC	CF®488A Features
BNC68	CF®568	562/583	532, 561	RFP, TRITC	CF®568 Features
BNC94	CF®594	593/614	561	Texas Red®	CF®594 Features
BNC40	CF®640R	642/662	633-640	Cy®5	CF®640R Features
BNC47	CF®647	650/665	633-640	Cy®5	CF®647 Features
BNC74	CF®740	742/767	633-685	775/50	CF®740 Features
BNCB	Biotin	N/A	N/A	N/A	
BNUB	Purified	N/A	N/A	N/A	
BNUM	Purified, BSA-free	N/A	N/A	N/A	

Alexa Fluor, Pacific Blue, Pacific Orange, and Texas Red are trademarks or registered trademarks of Thermo Fisher Scientific; Cy is a registered trademark of Cytiva; IRDye, LI-COR, and Odyssey are registered trademarks of LI-COR Bioscience.

This datasheet was generated on January 8, 2026 at 12:28:25 AM. Visit product page to check for updated information before use.
Product link: <https://biotium.com/product/monoclonal-anti-hepatocyte-specific-cps11022/>