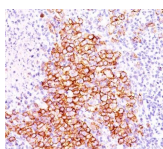


CD30 / TNFRSF8 Monoclonal Mouse Antibody (CD30/412)



Product Description

Recognizes a single chain glycoprotein of 105/120 kDa, identified as CD30/Ki-1. CD30 is synthesized as a 90 kDa precursor, which is processed in the Golgi complex into a membrane-bound phosphorylated mature 105/120 kDa glycoprotein. In Hodgkin's disease, CD30/Ki-1 antigen is expressed by mononuclear-Hodgkin and multinucleated Reed-Sternberg cells. It is also expressed by the tumor cells of a majority of anaplastic large cell lymphomas as well as by a varying proportion of activated T and B cells. This MAb distinguishes large cell lymphomas derived from activated lymphoid cells from histiocytic malignancies and lymphomas derived from resting and precursor lymphoid cells or from anaplastic carcinomas. About one third of the Ki-1 positive lymphomas lack the leukocyte common antigen (CD45).

Primary antibodies are available purified, or with a selection of fluorescent CF® dyes and other labels. CF® dyes offer exceptional brightness and photostability. See the [CF® Dye Brochure](#) for more information. Note: Conjugates of blue fluorescent dyes like CF®405S and CF®405M are not recommended for detecting low abundance targets, because blue dyes have lower fluorescence and can give higher non-specific background than other dye colors.

Stock status: Because Biotium offers a large number of antibody and conjugation options, primary antibody conjugates may be made to order. Typical lead times are up to one week for CF® dye and biotin conjugates, and up to 2-3 weeks for fluorescent protein and enzyme conjugates. Please email order@biotium.com to inquire about stock status and lead times before placing your order.

Catalog number key for antibody number 0412, Anti-CD30|TNFRSF8 (CD30/412)

Product attributes

Antibody number	#0412
Antibody reactivity (target)	CD30, TNFRSF8
Antibody type	Primary
Host species	Mouse
Clonality	Monoclonal
Clone	CD30/412
Isotype	IgG1, kappa
Molecular weight	105-120 kDa
Synonyms	CD30L receptor, Cytokine receptor CD30, Ki-1 antigen, Lymphocyte activation antigen CD30, Tumor necrosis factor receptor superfamily member 8 (TNFRSF8)
Human gene symbol	TNFRSF8
Entrez gene ID	943
SwissProt	P28908
Unigene	1314
Immunogen	Human CD30 recombinant protein
Antibody target cellular localization	Plasma membrane
Species reactivity	Human
Verified antibody applications	IHC (FPPE) (verified)
Antibody application notes	Higher concentration may be required for direct detection using primary antibody conjugates than for indirect detection with secondary antibody, Immunofluorescence: 1-2 ug/mL, Immunohistology formalin-fixed 0.5-1 ug/mL, Staining of formalin-fixed tissues requires boiling tissue sections in 10 mM Tris with 1 mM EDTA, pH 9.0, for 10-20 min followed by cooling at RT for 20 minutes, Flow Cytometry 0.5-1 ug/million cells/0.1 mL, Optimal dilution for a specific application should be determined by user
Shipping condition	Room temperature
Storage Conditions	Store at 2 to 8 °C, Protect fluorescent conjugates from light, Note: store BSA-free antibodies at -10 to -35 °C
Shelf life	Guaranteed for at least 24 months from date of receipt when stored as recommended
Regulatory status	For research use only (RUO)
Antibody research areas	Immunology
Cell/tissue expression	Lymphocytes
Antibody/conjugate formulation	Conjugates: 0.1 mg/mL in PBS/0.1% BSA/0.05% azide, HRP conjugates: 0.1 mg/mL in PBS/0.05% BSA, Purified: 0.2 mg/mL in PBS/0.05% BSA/0.05% azide, Purified, BSA-free: 1 mg/mL in PBS without azide
Tumor expression	Leukemia/lymphoma
Product origin	Product may contain either bovine serum albumin (BSA) from bovine serum (Bos taurus), or recombinant BSA produced in Chinese hamster ovary cells. Inquire for the specific lot.
Positive control	Hodgkin's lymphoma

Antibody # prefix	Conjugation	Ex/Em (nm)	Laser line	Detection channel	Dye Features
BNC04	CF®405S	404/431	405	DAPI (microscopy), AF405	CF®405S Features
BNC88	CF®488A	490/515	488	GFP, FITC	CF®488A Features
BNC68	CF®568	562/583	532, 561	RFP, TRITC	CF®568 Features
BNC94	CF®594	593/614	561	Texas Red®	CF®594 Features
BNC40	CF®640R	642/662	633-640	Cy®5	CF®640R Features
BNC47	CF®647	650/665	633-640	Cy®5	CF®647 Features
BNC74	CF®740	742/767	633-685	775/50	CF®740 Features
BNCB	Biotin	N/A	N/A	N/A	
BNUB	Purified	N/A	N/A	N/A	
BNUM	Purified, BSA-free	N/A	N/A	N/A	

Alexa Fluor, Pacific Blue, Pacific Orange, and Texas Red are trademarks or registered trademarks of Thermo Fisher Scientific; Cy is a registered trademark of Cytiva; IRDye, LI-COR, and Odyssey are registered trademarks of LI-COR Bioscience.

This datasheet was generated on August 24, 2025 at 02:25:22 AM. Visit product page to check for updated information before use.

Product link: <https://biotium.com/product/monoclonal-anti-cd30-cd30412/>