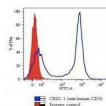


## CD5 Monoclonal Mouse Antibody (Cris-1)



### Product Description

Recognizes a 67 kDa transmembrane protein, which is identified as CD5 (HLDA I; WS Code T 29HLDA III; WS Code T 530). The CD5 antigen is found on 95% of thymocytes and 72% of peripheral blood lymphocytes. In lymph nodes, the main reactivity is observed in T cell areas. Anti-CD5 is a pan T-cell marker that also reacts with a range of neoplastic B-cells, e.g. chronic lymphocytic leukemia/small lymphocytic lymphoma (CLL/SLL), mantle cell lymphoma, and a subset (~10%) of diffuse large B-cell lymphoma. CD5 aberrant expression is useful in making a diagnosis of mature T-cell neoplasms.

Primary antibodies are available purified, or with a selection of fluorescent CF® dyes and other labels. CF® dyes offer exceptional brightness and photostability. See the [CF® Dye Brochure](#) for more information. Note: Conjugates of blue fluorescent dyes like CF®405S and CF®405M are not recommended for detecting low abundance targets, because blue dyes have lower fluorescence and can give higher non-specific background than other dye colors.

**Stock status:** Because Biotium offers a large number of antibody and conjugation options, primary antibody conjugates may be made to order. Typical lead times are up to one week for CF® dye and biotin conjugates, and up to 2-3 weeks for fluorescent protein and enzyme conjugates. Please email [order@biotium.com](mailto:order@biotium.com) to inquire about stock status and lead times before placing your order.

**Catalog number key for antibody number 0176, Anti-CD5 (Cris-1)**

### Product attributes

<b>Antibody number</b>	#0176
<b>Antibody reactivity (target)</b>	CD5
<b>Antibody type</b>	Primary
<b>Host species</b>	Mouse
<b>Clonality</b>	Monoclonal
<b>Clone</b>	Cris-1
<b>Isotype</b>	IgG2a, kappa
<b>Molecular weight</b>	67 kDa
<b>Synonyms</b>	CD5 antigen (p56 62), LEU1, Ly12, LyA, Lymphocyte antigen T1/Leu-1, Lymphocyte glycoprotein T1/Leu1, T-cell surface glycoprotein CD5
<b>Human gene symbol</b>	CD5
<b>Entrez gene ID</b>	921
<b>SwissProt</b>	P06127
<b>Unigene</b>	58685
<b>Immunogen</b>	Stimulated human leukocytes
<b>Antibody target cellular localization</b>	Plasma membrane
<b>Verified antibody applications</b>	Flow (verified)
<b>Species reactivity</b>	Human, Rhesus monkey
<b>Expected antibody applications</b>	ELISA (published for clone), Functional studies (published for clone), IP (published for clone)
<b>Antibody application notes</b>	Higher concentration may be required for direct detection using primary antibody conjugates than for indirect detection with secondary antibody, Flow Cytometry 0.5-1 ug/million cells/0.1 mL, Immunofluorescence 0.5-1 ug/mL Immunoprecipitation 0.5-1 ug/500 ug protein lysate, Optimal dilution for a specific application should be determined by user
<b>Positive control</b>	293T, Ramos, or MOLT-4 Cells. Tonsil.
<b>Shipping condition</b>	Room temperature
<b>Storage Conditions</b>	Store at 2 to 8 °C, Protect fluorescent conjugates from light, Note: store BSA-free antibodies at -10 to -35 °C
<b>Shelf life</b>	Guaranteed for at least 24 months from date of receipt when stored as recommended
<b>Regulatory status</b>	For research use only (RUO)
<b>Antibody/conjugate formulation</b>	Conjugates: 0.1 mg/mL in PBS/0.1% BSA/0.05% azide, HRP conjugates: 0.1 mg/mL in PBS/0.05% BSA, Purified: 0.2 mg/mL in PBS/0.05% BSA/0.05% azide, Purified, BSA-free: 1 mg/mL in PBS without azide
<b>Antibody research areas</b>	Immunology
<b>Product origin</b>	Product may contain either bovine serum albumin (BSA) from bovine serum ( <i>Bos taurus</i> ), or recombinant BSA produced in Chinese hamster ovary cells. Inquire for the specific lot.
<b>Cell/tissue expression</b>	Lymphocytes, T-cells
<b>Tumor expression</b>	Leukemia/lymphoma

Antibody # prefix	Conjugation	Ex/Em (nm)	Laser line	Detection channel	Dye Features
BNC04	CF@405S	404/431	405	DAPI (microscopy), AF405	<a href="#">CF@405S Features</a>
BNC88	CF@488A	490/515	488	GFP, FITC	<a href="#">CF@488A Features</a>
BNC68	CF@568	562/583	532, 561	RFP, TRITC	<a href="#">CF@568 Features</a>
BNC94	CF@594	593/614	561	Texas Red®	<a href="#">CF@594 Features</a>
BNC40	CF@640R	642/662	633-640	Cy@5	<a href="#">CF@640R Features</a>
BNC47	CF@647	650/665	633-640	Cy@5	<a href="#">CF@647 Features</a>
BNC74	CF@740	742/767	633-685	775/50	<a href="#">CF@740 Features</a>
BNCB	Biotin	N/A	N/A	N/A	
BNUB	Purified	N/A	N/A	N/A	
BNUM	Purified, BSA-free	N/A	N/A	N/A	

Alexa Fluor, Pacific Blue, Pacific Orange, and Texas Red are trademarks or registered trademarks of Thermo Fisher Scientific; Cy is a registered trademark of Cytiva; IRDye, LI-COR, and Odyssey are registered trademarks of LI-COR Bioscience.

## References

Note: References for this clone sold by other suppliers may be listed for expected applications.

1. Immunology (1990) 70, 434-439. (Flow)
2. J Immunol (1992) 148(5):1287-93. (receptor activation)
3. J Immunol (1993) 151 (9): 4423-4430. (IP)
4. Nature (1991) 351: 662-665. (ELISA)

This datasheet was generated on November 29, 2024 at 12:49:55 AM. Visit product page to check for updated information before use.

Product link: <https://biotium.com/product/monoclonal-anti-cd5-cris-1/>