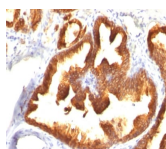


# Cytokeratin 18 Monoclonal Mouse Antibody (KRT18/836)



## Product Description

This MAbs reacts with a wide variety of simple epithelia. It does not react with stratified squamous epithelia. It reacts with epithelial tumors of the gastrointestinal tract, lung, breast, pancreas, ovary, and thyroid. Cytokeratin 18, which belongs to the type A (acidic) subfamily of low molecular weight keratins, exists in combination with cytokeratin 8. It is reported that tissues from gastrointestinal tract are positive for both cytokeratin 8 and 18 but do not contain cytokeratin 14. Tissues from gastrointestinal tract, respiratory tract and urogenital tract, as well as endocrine and exocrine tissues and mesothelial cells are positive for cytokeratin 18.

Primary antibodies are available purified, or with a selection of fluorescent CF® dyes and other labels. CF® dyes offer exceptional brightness and photostability. See the [CF® Dye Brochure](#) for more information. Note: Conjugates of blue fluorescent dyes like CF®405S and CF®405M are not recommended for detecting low abundance targets, because blue dyes have lower fluorescence and can give higher non-specific background than other dye colors.

**Stock status:** Because Biotium offers a large number of antibody and conjugation options, primary antibody conjugates may be made to order. Typical lead times are up to one week for CF® dye and biotin conjugates, and up to 2-3 weeks for fluorescent protein and enzyme conjugates. Please email [order@biotium.com](mailto:order@biotium.com) to inquire about stock status and lead times before placing your order.

**Catalog number key for antibody number 0836, Anti-Cytokeratin 18 (KRT18/836)**

Call us : [800-304-5357](tel:800-304-5357) Email: [techsupport@biotium.com](mailto:techsupport@biotium.com)

## Product attributes

|                                       |  |
|---------------------------------------|--|
| Antibody number                       | #0836  |
| Antibody reactivity (target)          | Cytokeratin 18   |
| Antibody type                         | Primary  |
| Host species                          | Mouse  |
| Clonality                             | Monoclonal   |
| Clone                                 | KRT18/836  |
| Isotype                               | IgG1   |
| Molecular weight                      | 45 kDa   |
| Synonyms                              | Cell Proliferation-inducing Gene 46 Protein; CK18; CYK18 Cytokeratin Endo B; K18; Keratin-18; Kerd; KRT18  |
| Human gene symbol                     | KRT18  |
| Entrez gene ID                        | 3875   |
| SwissProt                             | P05783   |
| Unigene                               | 406013   |
| Immunogen                             | Recombinant human KRT18 protein  |
| Verified antibody applications        | IF (verified), IHC (FFPE) (verified), WB (verified)  |
| Antibody target cellular localization | Cytoskeleton   |
| Species reactivity                    | Cat, Dog, Human  |
| Antibody application notes            | Higher concentration may be required for direct detection using primary antibody conjugates than for indirect detection with secondary antibody, Immunofluorescence: 1-2 ug/mL, Does not react with rat; others not known, Immunohistology formalin-fixed 2-4 ug/mL, Staining of formalin-fixed tissues requires boiling tissue sections in 10 mM citrate buffer, pH 6.0, for 10-20 min followed by cooling at RT for 20 minutes, Flow Cytometry 0.5-1 ug/million cells/0.1 mL, Optimal dilution for a specific application should be determined by user |
| Positive control                      | MCF-7, HeLa, A431 cells or Breast Cancer   |
| Shipping condition                    | Room temperature   |
| Storage Conditions                    | Store at 2 to 8 °C, Protect fluorescent conjugates from light, Note: store BSA-free antibodies at -10 to -35 °C  |
| Shelf life                            | Guaranteed for at least 24 months from date of receipt when stored as recommended  |
| Regulatory status                     | For research use only (RUO)  |
| Antibody/conjugate formulation        | Conjugates: 0.1 mg/mL in PBS/0.1% BSA/0.05% azide, HRP conjugates: 0.1 mg/mL in PBS/0.05% BSA, Purified: 0.2 mg/mL in PBS/0.05% BSA/0.05% azide, Purified, BSA-free: 1 mg/mL in PBS without azide  |
| Validated in protein array            | Monospecific   |
| Antibody research areas               | Cancer, Cytoskeleton   |
| Product origin                        | Product may contain either bovine serum albumin (BSA) from bovine serum (Bos taurus), or recombinant BSA produced in Chinese hamster ovary cells. Inquire for the specific lot.  |
| Cell/tissue expression                | Epithelial cells   |
| Tumor expression                      | Breast cancer, Colorectal cancer, Lung cancer, Ovarian cancer, Thyroid cancer  |

| Antibody # prefix | Conjugation        | Ex/Em (nm) | Laser line | Detection channel        | Dye Features                     |
|-------------------|--------------------|------------|------------|--------------------------|----------------------------------|
| BNC04             | CF®405S            | 404/431    | 405        | DAPI (microscopy), AF405 | <a href="#">CF®405S Features</a> |
| BNC88             | CF®488A            | 490/515    | 488        | GFP, FITC                | <a href="#">CF®488A Features</a> |
| BNC68             | CF®568             | 562/583    | 532, 561   | RFP, TRITC               | <a href="#">CF®568 Features</a>  |
| BNC94             | CF®594             | 593/614    | 561        | Texas Red®               | <a href="#">CF®594 Features</a>  |
| BNC40             | CF®640R            | 642/662    | 633-640    | Cy®5                     | <a href="#">CF®640R Features</a> |
| BNC47             | CF®647             | 650/665    | 633-640    | Cy®5                     | <a href="#">CF®647 Features</a>  |
| BNC74             | CF®740             | 742/767    | 633-685    | 775/50                   | <a href="#">CF®740 Features</a>  |
| BNCB              | Biotin             | N/A        | N/A        | N/A                      |                                  |
| BNUB              | Purified           | N/A        | N/A        | N/A                      |                                  |
| BNUM              | Purified, BSA-free | N/A        | N/A        | N/A                      |                                  |

Alexa Fluor, Pacific Blue, Pacific Orange, and Texas Red are trademarks or registered trademarks of Thermo Fisher Scientific; Cy is a registered trademark of Cytiva; IRDye, LI-COR, and Odyssey are registered trademarks of LI-COR Bioscience.

This datasheet was generated on September 13, 2025 at 03:15:44 PM. Visit product page to check for updated information before use.

Product link: <https://biotium.com/product/monoclonal-anti-cytokeratin-18-krt18836/>