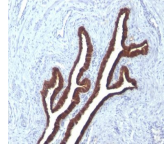


Cytokeratin 7 Monoclonal Mouse Antibody (KRT7/760 + KRT7/903)



Product Description

This antibody recognizes an intermediate filament protein (IFP) of 55 kDa, which is identified as cytokeratin 7. This MAb is highly specific to cytokeratin 7 and shows no cross-reaction with other IFPs. Cytokeratin 7 is a basic cytokeratin, which is found in most glandular and transitional epithelia but not in the stratified squamous epithelia. Keratin 7 is expressed in the epithelial cells of ovary, lung, and breast but not of colon, prostate, or gastrointestinal tract. This MAb is highly useful in distinguishing ovarian carcinomas (keratin 7+) from colon carcinomas (keratin 7-). Primary antibodies are available purified, or with a selection of fluorescent CF® dyes and other labels. CF® dyes offer exceptional brightness and photostability. See the [CF® Dye Brochure](#) for more information. Note: Conjugates of blue fluorescent dyes like CF®405S and CF®405M are not recommended for detecting low abundance targets, because blue dyes have lower fluorescence and can give higher non-specific background than other dye colors. **Stock status:** Because Biotium offers a large number of antibody and conjugation options, primary antibody conjugates may be made to order. Typical lead times are up to one week for CF® dye and biotin conjugates, and up to 2-3 weeks for fluorescent protein and enzyme conjugates. Please email order@biotium.com to inquire about stock status and lead times before placing your order. **Catalog number key for antibody number 0906, Anti-Cytokeratin 7 (KRT7/760 KRT7/903)**

Product attributes

Antibody number	#0906
Antibody reactivity (target)	Cytokeratin 7
Antibody type	Primary
Host species	Mouse
Clonality	Monoclonal
Clone	KRT7/760 KRT7/903
Isotype	IgG's
Molecular weight	55 kDa
Synonyms	CK-7, K2C7, Keratin 55K Type II Cytoskeletal, Keratin Simple Epithelial Type 1 K7, Keratin Type II Cytoskeletal 7, Krt2-7, KRT7, Sarcoclectin, SCL, Type II Mesothelial Keratin K7, Type-II Keratin Kb7
Human gene symbol	KRT7
Entrez gene ID	3855
SwissProt	P08729
Unigene	411501
Immunogen	Recombinant full-length human KRT7 protein
Verified antibody applications	IF (verified), IHC (FFPE) (verified), WB (verified)
Antibody target cellular localization	Cytoskeleton
Species reactivity	Human
Antibody application notes	Immunohistochemistry formalin-fixed 1-2 ug/mL. Staining of formalin-fixed tissues requires boiling tissue sections in 10 mM Tris buffer with 1 mM EDTA, pH 9.0, for 10-20 min followed by cooling at RT for 20 minutes. Immunofluorescence 0.5-1 ug/mL. Flow Cytometry 0.5-1 ug/million cells/0.1 mL. Optimal dilution for a specific application should be determined by user
Positive control	HeLa cells. Carcinoma of ovary, lung, cervix, or breast
Shipping condition	Room temperature
Storage Conditions	Store at 2 to 8 °C. Protect fluorescent conjugates from light. Note: store BSA-free antibodies at -10 to -35 °C
Shelf life	Guaranteed for at least 24 months from date of receipt when stored as recommended
Regulatory status	For research use only (RUO)
Antibody/conjugate formulation	Conjugates: 0.1 mg/mL in PBS/0.1% BSA/0.05% azide. HRP conjugates: 0.1 mg/mL in PBS/0.05% BSA. Purified: 0.2 mg/mL in PBS/0.05% BSA/0.05% azide. Purified, BSA-free: 1 mg/mL in PBS without azide
Antibody research areas	Cancer, Cytoskeleton
Cell/tissue expression	Epithelial cells
Tumor expression	Ovarian cancer

Antibody # prefix	Conjugation	Ex/Em (nm)	Laser line	Detection channel
BNC04	CF®405S	404/431	405	DAPI (microscopy), AF405
BNC88	CF®488A	490/515	488	GFP, FITC
BNC68	CF®568	562/583	532, 561	RFP, TRITC
BNC94	CF®594	593/614	561	Texas Red®
BNC40	CF®640R	642/662	633-640	Cy®5
BNC47	CF®647	650/665	633-640	Cy®5
BNCB	Biotin	N/A	N/A	N/A
BNUB	Purified	N/A	N/A	N/A
BNUM	Purified, BSA-free	N/A	N/A	N/A

Dye Features

[CF®405S Features](#)
[CF®488A Features](#)
[CF®568 Features](#)
[CF®594 Features](#)
[CF®640R Features](#)
[CF®647 Features](#)

Alexa Fluor, Pacific Blue, Pacific Orange, and Texas Red are trademarks or registered trademarks of Thermo Fisher Scientific; Cy is a registered trademark of Cytiva; IRDye, LI-COR, LI-COR Bioscience.