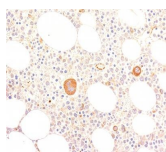


# von Willebrand Factor / vWF Monoclonal Mouse Antibody (VWF635)



## Product Description

von Willebrand Factor (vWF) is a multimeric glycoprotein that is found in endothelial cells, plasma and platelets. It acts as a carrier protein for Factor VIII and promotes platelet adhesion and aggregation. vWF undergoes a variety of posttranslational modifications that influence the affinity and availability for Factor VIII, including cleavage of the propeptide and formation of N-terminal disulfide bonds. This antibody helps to establish the endothelial nature of some lesions of disputed histogenesis, e.g. Kaposi's sarcoma and cardiac myxoma. It is widely used for differentiating vascular lesions from those of other tissue differentiation within a panel of other vascular markers although not all tumors of endothelial differentiation contain this antigen.

Primary antibodies are available purified, or with a selection of fluorescent CF® dyes and other labels. CF® dyes offer exceptional brightness and photostability. See the [CF® Dye Brochure](#) for more information. Note: Conjugates of blue fluorescent dyes like CF®405S and CF®405M are not recommended for detecting low abundance targets, because blue dyes have lower fluorescence and can give higher non-specific background than other dye colors.

**Stock status:** Because Biotium offers a large number of antibody and conjugation options, primary antibody conjugates may be made to order. Typical lead times are up to one week for CF® dye and biotin conjugates, and up to 2-3 weeks for fluorescent protein and enzyme conjugates. Please email [order@biotium.com](mailto:order@biotium.com) to inquire about stock status and lead times before placing your order.

**Catalog number key for antibody number 0635, Anti-von Willebrand Factor (VWF635)**

Call us : [800-304-5357](tel:800-304-5357)

## Product attributes

<b>Antibody number</b>	#0635
<b>Antibody reactivity (target)</b>	von Willebrand Factor, vWF
<b>Antibody type</b>	Primary
<b>Host species</b>	Mouse
<b>Clonality</b>	Monoclonal
<b>Clone</b>	VWF635
<b>Isotype</b>	IgG1, kappa
<b>Molecular weight of antigen</b>	250 kDa
<b>Synonyms</b>	Coagulation Factor VIII, Factor VIII Related Antigen, F8VWF, von Willebrand Antigen 2, von Willebrand Disease (vWD)
<b>Human gene symbol</b>	VWF
<b>Entrez gene ID</b>	7450
<b>SwissProt</b>	P04275
<b>Unigene</b>	440848
<b>Immunogen</b>	Recombinant human vWF fragment
<b>Antibody target cellular localization</b>	Secreted (extracellular), Vesicular
<b>Verified antibody applications</b>	IHC (FFPE) (verified)
<b>Species reactivity</b>	Human
<b>Antibody application notes</b>	Higher concentration may be required for direct detection using primary antibody conjugates than for indirect detection with secondary antibody. Immunoprecipitation: 0.5-1 ug/500 ug protein lysate, Immunofluorescence: 0.5-1 ug/mL, Immunohistology (formalin), Staining of formalin-fixed tissues requires boiling tissue sections in 10 mM citrate buffer, pH 6.0, for 10-20 min followed by cooling at RT for 20 minutes. Flow Cytometry 0.5-1 ug/million cells/0.1 mL, Western blotting 0.5-1.0 ug/mL. Optimal dilution for a specific application should be determined by user
<b>Positive control</b>	HUVEC cells or Tonsil
<b>Shipping condition</b>	Room temperature
<b>Storage Conditions</b>	Store at 2 to 8 °C, Protect fluorescent conjugates from light, Note: store BSA-free antibodies at -10 to -35 °C
<b>Shelf life</b>	Guaranteed for at least 24 months from date of receipt when stored as recommended
<b>Regulatory status</b>	For research use only (RUO)
<b>Antibody/conjugate formulation</b>	Conjugates: 0.1 mg/mL in PBS/0.1% BSA/0.05% azide, HRP conjugates: 0.1 mg/mL in PBS/0.05% BSA, Purified: 0.2 mg/mL in PBS/0.05% BSA/0.05% azide, Purified, BSA-free: 1 mg/mL in PBS without azide
<b>Antibody research areas</b>	Hematology
<b>Product origin</b>	Product may contain either bovine serum albumin (BSA) from bovine serum (Bos taurus), or recombinant BSA produced in Chinese hamster ovary cells. Inquire for the specific lot.
<b>Cell/tissue expression</b>	Endothelial cells

Antibody # prefix	Conjugation	Ex/Em (nm)	Laser line	Detection channel	Dye Features
BNC04	CF®405S	404/431	405	DAPI (microscopy), AF405	<a href="#">CF®405S Features</a>
BNC88	CF®488A	490/515	488	GFP, FITC	<a href="#">CF®488A Features</a>
BNC68	CF®568	562/583	532, 561	RFP, TRITC	<a href="#">CF®568 Features</a>
BNC94	CF®594	593/614	561	Texas Red®	<a href="#">CF®594 Features</a>
BNC40	CF®640R	642/662	633-640	Cy®5	<a href="#">CF®640R Features</a>
BNC47	CF®647	650/665	633-640	Cy®5	<a href="#">CF®647 Features</a>
BNC74	CF®740	742/767	633-685	775/50	<a href="#">CF®740 Features</a>
BNCB	Biotin	N/A	N/A	N/A	
BNUB	Purified	N/A	N/A	N/A	
BNUM	Purified, BSA-free	N/A	N/A	N/A	

Alexa Fluor, Pacific Blue, Pacific Orange, and Texas Red are trademarks or registered trademarks of Thermo Fisher Scientific; Cy is a registered trademark of Cytiva; IRDye, LI-COR, and Odyssey are registered trademarks of LI-COR Bioscience.

This datasheet was generated on June 5, 2026 at 02:09:07 AM. Visit product page to check for updated information before use.

Product link: <https://biotium.com/product/monoclonal-anti-von-willebrand-factor-vwf635/>