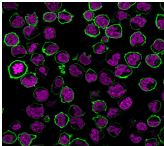


# CD43 Monoclonal Mouse Antibody (Bra7G)



## Product Description

This antibody recognizes a cell surface glycoprotein of 95/115/135 kDa (depending upon the extent of glycosylation), identified as CD43 (Workshop V). Epitope of MAb Bra7G is clearly different from that of MAb DF-T1, called b as opposed to a for DF-T1. 70-90% of T-cell lymphomas and from 22-37% of B-cell lymphomas express CD43. No reactivity has been observed with reactive B-cells. So a B-lineage population that co-expresses CD43 is highly likely to be a malignant lymphoma, especially a low-grade lymphoma, rather than a reactive B-cell population. When CD43 antibody is used in combination with anti-CD20, effective immunophenotyping of the lymphomas in formalin-fixed tissues can be obtained. Co-staining of a lymphoid infiltrate with anti-CD20 and anti-CD43 argues against a reactive process and favors a diagnosis of lymphoma. This antibody is available purified with BSA/azide at 200 ug/mL, or BSA/azide-free at 1 mg/mL.

## References

Note: References for this clone sold by other suppliers may be listed for expected applications.

1. Cancer Letters (1994) 81: 81-87. (flow, surface)
2. J Leukoc Biol (1998) 64: 800-802. (immunoprecipitation)

## Product attributes

Antibody number	#0302
Antibody reactivity (target)	CD43
Antibody type	Primary
Host species	Mouse
Clonality	Monoclonal
Clone	Bra7G
Isotype	IgM, kappa
Molecular weight	95, 115, or 135 kDa
Synonyms	Galactoglycoprotein, GALGP, GPL115, Leukocyte sialoglycoprotein, Leukosialin, LSN, Sialophorin, SPN
Human gene symbol	SPN
Entrez gene ID	6693
SwissProt	P16150
Unigene	632188
Immunogen	Immature pluripotent human leukemia K562 cells
Verified antibody applications	IF (verified), IHC (FFPE) (verified)
Antibody target cellular localization	Plasma membrane
Species reactivity	Human
Expected antibody applications	Flow, surface (published for clone), IP (published for clone)
Antibody application notes	Immunohistology formalin-fixed 0.5-1 ug/mL, For staining of formalin-fixed tissues, digest sections with trypsin at 1mg/mL PBS, 15 min at room temp, Flow Cytometry 0.5-1 ug/million cells/0.1 mL, Immunofluorescence 1-2 ug/mL, Optimal dilution for a specific application should be determined by user
Positive control	Paracortex in a tonsil or a reactive lymph node
Shipping condition	Room temperature
Storage Conditions	Store at 2 to 8 °C, Note: store BSA-free antibodies at -10 to -35 °C
Shelf life	Guaranteed for at least 24 months from date of receipt when stored as recommended
Regulatory status	For research use only (RUO)
Antibody/conjugate formulation	Conjugates: 0.1 mg/mL in PBS/0.1% BSA/0.05% azide, HRP conjugates: 0.1 mg/mL in PBS/0.05% BSA, Purified: 0.2 mg/mL in PBS/0.05% BSA/0.05% azide, Purified, BSA-free: 1 mg/mL in PBS without azide
Antibody research areas	Immunology
Cell/tissue expression	Lymphocytes
Tumor expression	Leukemia/lymphoma