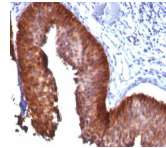


# Cytokeratin 17 Monoclonal Mouse Antibody (E3)



Cytokeratin 17 (CK17) is normally expressed in the basal cells of complex epithelia but not in stratified or simple epithelia.

## Product Description

Cytokeratin 17 (CK17) is normally expressed in the basal cells of complex epithelia but not in stratified or simple epithelia. Antibody to CK17 is an excellent tool to distinguish myoepithelial cells from luminal epithelium of various glands such as mammary, sweat and salivary. CK17 is expressed in epithelial cells of various origins, such as bronchial epithelial cells and skin appendages. It may be considered a stem cell marker because CK17 Ab marks basal cell differentiation. CK17 is expressed in SCLC much higher than in LADC. Eighty-five percent of the triple negative breast carcinomas immunoreact with basal cytokeratins including anti-CK17. Also important is that cases of triple negative breast carcinoma with expression of CK17 show an aggressive clinical course. The histologic differentiation of ampullary cancer, intestinal vs. pancreatobiliary, is very important for treatment. Usually anti-CK17 and anti-MUC1 immunoreactivity represents pancreatobiliary subtype whereas anti-MUC2 and anti-CDX-2 positivity defines intestinal subtype. Primary antibodies are available purified, or with a selection of fluorescent CF® dyes and other labels. CF® dyes offer exceptional brightness and photostability. See the [CF® Dye Brochure](#) for more information. Note: Conjugates of blue fluorescent dyes like CF®405S and CF®405M are not recommended for detecting low abundance targets, because blue dyes have lower fluorescence and can give higher non-specific background than other dye colors. **Stock status:** Because Biotium offers a large number of antibody and conjugation options, primary antibody conjugates may be made to order. Typical lead times are up to one week for CF® dye and biotin conjugates, and up to 2-3 weeks for fluorescent protein and enzyme conjugates. Please email [order@biotium.com](mailto:order@biotium.com) to inquire about stock status and lead times before placing your order. **Catalog number key for antibody number 0158, Anti-Cytokeratin 17 (E3)**

Antibody #	prefix Conjugation	Ex/Em	Concentration	Storage Buffer
BNC04	CF®405S	404/431 nm	0.1 mg/mL	PBS, 0.1% BSA, 0.05% azide
BNC05	CF®405M	408/452 nm	0.1 mg/mL	PBS, 0.1% BSA, 0.05% azide
BNC88	CF®488A	490/515 nm	0.1 mg/mL	PBS, 0.1% BSA, 0.05% azide
BNC43	CF®543	541/560 nm	0.1 mg/mL	PBS, 0.1% BSA, 0.05% azide
BNC55	CF®555	555/565 nm	0.1 mg/mL	PBS, 0.1% BSA, 0.05% azide
BNC68	CF®568	562/583 nm	0.1 mg/mL	PBS, 0.1% BSA, 0.05% azide
BNC94	CF®594	593/614 nm	0.1 mg/mL	PBS, 0.1% BSA, 0.05% azide
BNC40	CF®640R	642/662 nm	0.1 mg/mL	PBS, 0.1% BSA, 0.05% azide
BNC47	CF®647	650/665 nm	0.1 mg/mL	PBS, 0.1% BSA, 0.05% azide
BNC61	CF®660R	663/682 nm	0.1 mg/mL	PBS, 0.1% BSA, 0.05% azide
BNC80	CF®680	681/698 nm	0.1 mg/mL	PBS, 0.1% BSA, 0.05% azide
BNC81	CF®680R	680/701 nm	0.1 mg/mL	PBS, 0.1% BSA, 0.05% azide
BNC70	CF®770	770/797 nm	0.1 mg/mL	PBS, 0.1% BSA, 0.05% azide
BNCR	R-PE (PE)	496, 546, 565/578 nm	0.1 mg/mL	PBS, 0.1% BSA, 0.05% azide
BNCA	APC	650/660 nm	0.1 mg/mL	PBS, 0.1% BSA, 0.05% azide
BNCP	PerCP	482/677 nm	0.1 mg/mL	PBS, 0.1% BSA, 0.05% azide
BNCB	Biotin	N/A	0.1 mg/mL	PBS, 0.1% BSA, 0.05% azide
BNCAP	Alkaline Phosphatase	N/A	0.1 mg/mL	PBS, 0.1% BSA, 0.05% azide
BNCH	Horseradish Peroxidase	N/A	0.1 mg/mL	PBS, 0.05% BSA, no azide
BNUB	Purified, with BSA	N/A	0.2 mg/mL	PBS, 0.05% BSA, 0.05% azide
BNUM	Purified, BSA-free	N/A	1 mg/mL	PBS, no BSA, no azide

## References

(1) Smedts et. al. Am J Pathol 141: 497, 1992. (2) Smedts et. al. Am J Pathol 140: 601, 1992. (3) Wetzels et. al. Histopathol 20: 295, 1992. |

Product attributes	
Antibody number	0158
Reactivity (target)	Cytokeratin 17
Antibody type	Primary
Host species	Mouse
Clonality	Monoclonal
Clone	E3
Isotype	IgG2b, kappa
Molecular weight	46 kDa
Synonyms	K17; Keratin Type I Cytoskeletal 17; Keratin-17; KRT17; PCHC1
Human gene symbol	KRT17
Entrez gene ID	3872
SwissProt	Q04695
Unigene	2785
Immunogen	The cytoskeletal fraction of rat colon epithelium
Cellular localization	Cytoskeleton
Species reactivity	Cow, Goat, Human, Pig, Rat
Applications	Immunofluorescence, Immunohistology (formalin), Flow cytometry, Immunohistology (frozen), Western
Application notes	Immunohistology frozen & formalin-fixed 0.5-1 ug/mL, Staining of formalin-fixed tissues requires boiling tissue sections in 10 mM citrate buffer, pH 6.0, for 10-20 min followed by cooling at RT for 20 minutes, Flow Cytometry 0.5-1 ug/million cells/0.1 mL, Immunofluorescence 1-2 ug/mL, Western blotting 0.5-1 ug/mL, Optimal dilution for a specific application should be determined by user
Positive control	T24 cells or Skin. Bladder or Cervix.
Shipping condition	Room temperature
Storage Conditions	Store at 2 to 8 °C, Protect fluorescent conjugates from light, Note: store BSA-free antibodies at -10 to -35 °C
Shelf life	Guaranteed for at least 24 months from date of receipt when stored as recommended
Regulatory status	For research use only (RUO)
Research areas	Cancer, Cytoskeleton
Cell/tissue expression	Epithelial cells
Tumor expression	Breast cancer, Lung cancer