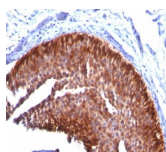


# Cytokeratin 17 Monoclonal Mouse Antibody (KRT17/778)



Call us : [800-304-5357](tel:800-304-5357)

## Product Description

Cytokeratin 17 (CK17) is normally expressed in the basal cells of complex epithelia but not in stratified or simple epithelia. Antibody to CK17 is an excellent tool to distinguish myoepithelial cells from luminal epithelium of various glands such as mammary, sweat and salivary. CK17 is expressed in epithelial cells of various origins, such as bronchial epithelial cells and skin appendages. It may be considered as epithelial stem cell marker because CK17 Ab marks basal cell differentiation. CK17 is expressed in SCLC much higher than in LADC. Eighty-five percent of the triple negative breast carcinomas immunoreact with basal cytokeratins including anti-CK17. Also important is that cases of triple negative breast carcinoma with expression of CK17 show an aggressive clinical course. The histologic differentiation of ampullary cancer, intestinal vs. pancreatobiliary, is very important for treatment. Usually anti-CK17 and anti-MUC1 immunoreactivity represents pancreatobiliary subtype whereas anti-MUC2 and anti-CDX-2 positivity defines intestinal subtype.

Primary antibodies are available purified, or with a selection of fluorescent CF® dyes and other labels. CF® dyes offer exceptional brightness and photostability. See the [CF® Dye Brochure](#) for more information. Note: Conjugates of blue fluorescent dyes like CF®405S and CF®405M are not recommended for detecting low abundance targets, because blue dyes have lower fluorescence and can give higher non-specific background than other dye colors.

**Stock status:** Because Biotium offers a large number of antibody and conjugation options, primary antibody conjugates may be made to order. Typical lead times are up to one week for CF® dye and biotin conjugates, and up to 2-3 weeks for fluorescent protein and enzyme conjugates. Please email [order@biotium.com](mailto:order@biotium.com) to inquire about stock status and lead times before placing your order.

**Catalog number key for antibody number 0778, Anti-Cytokeratin 17 (KRT17/778)**

## Product attributes

Antibody number	#0778
Antibody reactivity (target)	Cytokeratin 17
Antibody type	Primary
Host species	Mouse
Clonality	Monoclonal
Clone	KRT17/778
Isotype	IgG2b, kappa
Molecular weight of antigen	46 kDa
Synonyms	K17; Keratin Type I Cytoskeletal 17; Keratin-17; KRT17; PCHC1
Human gene symbol	KRT17
Entrez gene ID	3872
SwissProt	Q04695
Unigene	2785
Immunogen	Recombinant full-length human KRT17 protein
Antibody target cellular localization	Cytoskeleton
Verified antibody applications	IHC (FFPE) (verified)
Species reactivity	Cow, Goat, Human, Pig, Rat
Antibody application notes	Higher concentration may be required for direct detection using primary antibody conjugates than for indirect detection with secondary antibody. Immunofluorescence: 1-2 ug/mL. Immunohistology formalin-fixed 0.5-1 ug/mL. Staining of formalin-fixed tissues requires boiling tissue sections in 10 mM citrate buffer, pH 6.0, for 10-20 min followed by cooling at RT for 20 minutes. Flow Cytometry 0.5-1 ug/million cells/0.1 mL. Optimal dilution for a specific application should be determined by user
Positive control	T24 cells or Skin. Bladder or Cervix.
Shipping condition	Room temperature
Storage Conditions	Store at 2 to 8 °C. Protect fluorescent conjugates from light. Note: store BSA-free antibodies at -10 to -35 °C
Shelf life	Guaranteed for at least 24 months from date of receipt when stored as recommended
Regulatory status	For research use only (RUO)
Antibody/conjugate formulation	Conjugates: 0.1 mg/mL in PBS/0.1% BSA/0.05% azide, HRP conjugates: 0.1 mg/mL in PBS/0.05% BSA, Purified: 0.2 mg/mL in PBS/0.05% BSA/0.05% azide, Purified, BSA-free: 1 mg/mL in PBS without azide
Antibody research areas	Cancer, Cytoskeleton
Product origin	Product may contain either bovine serum albumin (BSA) from bovine serum (Bos taurus), or recombinant BSA produced in Chinese hamster ovary cells. Inquire for the specific lot.
Cell/tissue expression	Epithelial cells
Tumor expression	Breast cancer, Lung cancer

Antibody # prefix	Conjugation	Ex/Em (nm)	Laser line	Detection channel	Dye Features
BNC04	CF®405S	404/431	405	DAPI (microscopy), AF405	<a href="#">CF®405S Features</a>
BNC88	CF®488A	490/515	488	GFP, FITC	<a href="#">CF®488A Features</a>
BNC68	CF®568	562/583	532, 561	RFP, TRITC	<a href="#">CF®568 Features</a>
BNC94	CF®594	593/614	561	Texas Red®	<a href="#">CF®594 Features</a>
BNC40	CF®640R	642/662	633-640	Cy®5	<a href="#">CF®640R Features</a>
BNC47	CF®647	650/665	633-640	Cy®5	<a href="#">CF®647 Features</a>
BNC74	CF®740	742/767	633-685	775/50	<a href="#">CF®740 Features</a>
BNCB	Biotin	N/A	N/A	N/A	
BNUB	Purified	N/A	N/A	N/A	
BNUM	Purified, BSA-free	N/A	N/A	N/A	

Alexa Fluor, Pacific Blue, Pacific Orange, and Texas Red are trademarks or registered trademarks of Thermo Fisher Scientific; Cy is a registered trademark of Cytiva; IRDye, LI-COR, and Odyssey are registered trademarks of LI-COR Bioscience.

This datasheet was generated on June 15, 2026 at 07:48:23 AM. Visit product page to check for updated information before use. Product link: <https://biotium.com/product/monoclonal-anti-cytokeratin-17-krt17778/>