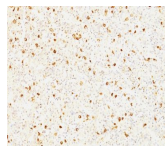


# Luteinizing Hormone-Beta Monoclonal Mouse Antibody (LHb/1214)



## Product Description

Luteinizing hormone (LH) is a glycoprotein. Each monomeric unit is a sugar-like protein molecule; two of these make the full, functional protein. Its structure is similar to the other glycoproteins, follicle-stimulating hormone (FSH), thyroid-stimulating hormone (TSH), and human chorionic gonadotropin (hCG). The protein dimer contains 2 polypeptide units, labeled alpha and beta subunits that are connected by two bridges. The alpha subunits of LH, FSH, TSH, and hCG are identical, and contain 92 amino acids. The beta subunits vary. LH has a beta subunit of 121 amino acids (LHB) that confers its specific biologic action and is responsible for interaction with the LH receptor. This beta subunit contains the same amino acids in sequence as the beta subunit of hCG and both stimulate the same receptor; however, the hCG beta subunit contains an additional 24 amino acids and the hormones differ in the composition of their sugar moieties. LH is synthesized and secreted by gonadotrophs in the anterior lobe of the pituitary gland. In concert with the other pituitary gonadotropin follicle-stimulating hormone (FSH), it is necessary for proper reproductive function. In the female, an acute rise of LH levels triggers ovulation. In the male, where LH has also been called Interstitial Cell-Stimulating Hormone (ICSH), it stimulates Leydig cell production of testosterone. LH is a useful marker in classification of pituitary tumors and the study of pituitary disease.

Primary antibodies are available purified, or with a selection of fluorescent CF® dyes and other labels. CF® dyes offer exceptional brightness and photostability. See the [CF® Dye Brochure](#) for more information. Note: Conjugates of blue fluorescent dyes like CF®405S and CF®405M are not recommended for detecting low abundance targets, because blue dyes have lower fluorescence and can give higher non-specific background than other dye colors.

**Stock status:** Because Biotium offers a large number of antibody and conjugation options, primary antibody conjugates may be made to order. Typical lead times are up to one week for CF® dye and biotin conjugates, and up to 2-3 weeks for fluorescent protein and enzyme conjugates. Please email [order@biotium.com](mailto:order@biotium.com) to inquire about stock status and lead times before placing your order.

**Catalog number key for antibody number 1214, Anti-Luteinizing Hormone-Beta (LHb/1214)**

## Product attributes

Antibody number	#1214
Antibody reactivity (target)	Luteinizing Hormone-Beta
Antibody type	Primary
Host species	Mouse
Clonality	Monoclonal
Clone	LHb/1214
Isotype	IgG1, kappa
Molecular weight	22 kDa
Synonyms	Chorionic Gonadotropin, Beta polypeptide 4 (CGB4); hLHB; Interstitial cell stimulating hormone beta chain; Lutropin; LH-B; LHB; LSH-B; LSH-beta; Luteinizing hormone beta polypeptide; Lutropin beta chain
Human gene symbol	LHB
Entrez gene ID	3972
SwissProt	P01229
Unigene	154704
Immunogen	Recombinant beta sub-unit of human LH
Verified antibody applications	IHC (FFPE) (verified)
Antibody target cellular localization	Secreted (extracellular)
Species reactivity	Human
Antibody application notes	Higher concentration may be required for direct detection using primary antibody conjugates than for indirect detection with secondary antibody. Immunofluorescence: 1-2 ug/mL. Immunohistology formalin-fixed 0.5-1 ug/mL. Staining of formalin-fixed tissues requires boiling tissue sections in 10 mM citrate buffer, pH 6.0, for 10-20 min followed by cooling at RT for 20 minutes. Flow Cytometry 0.5-1 ug/million cells/0.1 mL. Optimal dilution for a specific application should be determined by user
Positive control	Anterior Pituitary
Shipping condition	Room temperature
Storage Conditions	Store at 2 to 8 °C. Protect fluorescent conjugates from light. Note: store BSA-free antibodies at -10 to -35 °C
Shelf life	Guaranteed for at least 24 months from date of receipt when stored as recommended
Regulatory status	For research use only (RUO)
Antibody/conjugate formulation	Conjugates: 0.1 mg/mL in PBS/0.1% BSA/0.05% azide, HRP conjugates: 0.1 mg/mL in PBS/0.05% BSA, Purified: 0.2 mg/mL in PBS/0.05% BSA/0.05% azide, Purified, BSA-free: 1 mg/mL in PBS without azide
Antibody research areas	Cancer, Endocrinology
Tumor expression	Breast cancer

Antibody # prefix	Conjugation	Ex/Em (nm)	Laser line	Detection channel	Dye Features
BNC04	CF®405S	404/431	405	DAPI (microscopy), AF405	<a href="#">CF®405S Features</a>
BNC88	CF®488A	490/515	488	GFP, FITC	<a href="#">CF®488A Features</a>
BNC68	CF®568	562/583	532, 561	RFP, TRITC	<a href="#">CF®568 Features</a>
BNC94	CF®594	593/614	561	Texas Red®	<a href="#">CF®594 Features</a>
BNC40	CF®640R	642/662	633-640	Cy®5	<a href="#">CF®640R Features</a>
BNC47	CF®647	650/665	633-640	Cy®5	<a href="#">CF®647 Features</a>
BNCB	Biotin	N/A	N/A	N/A	
BNUB	Purified	N/A	N/A	N/A	
BNUM	Purified, BSA-free	N/A	N/A	N/A	

Alexa Fluor, Pacific Blue, Pacific Orange, and Texas Red are trademarks or registered trademarks of Thermo Fisher Scientific; Cy is a registered trademark of Cytiva; IRDye, LI-COR, or LI-COR Bioscience.