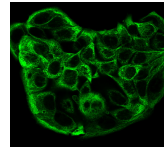


Cytokeratin, Multi Monoclonal Mouse Antibody (C11)



Product Description

This MAb recognizes cytokeratin 4, 5, 6, 8, 10, 13, and 18. This is a broad-spectrum antibody, which has been reported to differentiate epithelial tumors from non-epithelial tumors. Many studies have shown the usefulness of keratins as markers in cancer research and tumor diagnosis. Primary antibodies are available purified, or with a selection of fluorescent CF® dyes and other labels. CF® dyes offer exceptional brightness and photostability. See the [CF® Dye Brochure](#) for more information. Note: Conjugates of blue fluorescent dyes like CF®405S and CF®405M are not recommended for detecting low abundance targets, because blue dyes have lower fluorescence and can give higher non-specific background than other dye colors. **Stock status:** Because Biotium offers a large number of antibody and conjugation options, primary antibody conjugates may be made to order. Typical lead times are up to one week for CF® dye and biotin conjugates, and up to 2-3 weeks for fluorescent protein and enzyme conjugates. Please email order@biotium.com to inquire about stock status and lead times before placing your order.

References

Note: References for this clone sold by other suppliers may be listed for expected applications.

Clin Cancer Res (2012) 18(4): 993-1003. (IHC, FFPE; western)

Product attributes

| | |
|---------------------------------------|---|
| Antibody number | #0393 |
| Antibody reactivity (target) | Cytokeratin, multi |
| Antibody type | Primary |
| Host species | Mouse |
| Clonality | Monoclonal |
| Clone | C11 |
| Isotype | IgG1 |
| Molecular weight | Multiple |
| Synonyms | K18; KRT18; Keratin, type II cytoskeletal 1b; K77; CK-18; Keratin 18; Keratin-77; Cytokeratin-18; Type-II Keratin Kb39 |
| Human gene symbol | KRT4 |
| Entrez gene ID | 3851 (CK4); 3852 (CK5); 3853 (CK6A); 3854 (CK6B); 286887 (CK6C); 3856 (CK8); 3858 (CK10); 3860 (CK13); 3875 (CK18) |
| SwissProt | P19013 (CK4); P13647 (CK5); P02538 (CK6A); P04259 (CK6B); P48668 (CK6C); P05787 (CK8); P13645 (CK10); P13646 (CK13); P05783 (CK18) |
| Immunogen | Keratin-enriched preparation from cultured human A431 |
| Antibody target cellular localization | Cytoskeleton |
| Verified antibody applications | Flow (intracellular) (verified), IF (verified), IHC (FFPE) (verified) |
| Species reactivity | Cow, Frog, Goat, Guinea pig, Human, Marmoset, Mouse, Pig, Rat |
| Expected antibody applications | WB (published for clone) |
| Antibody application notes | Higher concentration may be required for direct detection using primary antibody conjugates than for indirect detection with secondary antibody. Immunohistology formalin-fixed 0.5-1.0ug/mL. Staining of formalin-fixed tissues requires boiling tissue sections in 10 mM citrate buffer, pH 6.0, for 10-20 minutes followed by cooling at RT for 20 minutes. Flow Cytometry 0.5-1 ug/million cells/0.1 mL. Immunofluorescence 0.5-1.0 ug/mL. Western blotting 0.5-1.0 ug/mL. Optimal dilution for a specific application should be determined by user |
| Positive control | A431 cells, Skin, Colon carcinoma |
| Shipping condition | Room temperature |
| Storage Conditions | Store at 2 to 8 °C. Protect fluorescent conjugates from light, Note: store BSA-free antibodies at -10 to -35 °C |
| Shelf life | Guaranteed for at least 24 months from date of receipt when stored as recommended |
| Regulatory status | For research use only (RUO) |
| Antibody/conjugate formulation | Conjugates: 0.1 mg/mL in PBS/0.1% BSA/0.05% azide, HRP conjugates: 0.1 mg/mL in PBS/0.05% BSA, Purified: 0.2 mg/mL in PBS/0.05% BSA/0.05% azide, Purified, BSA-free: 1 mg/mL in PBS without azide |
| Antibody research areas | Cancer, Cytoskeleton |
| Cell/tissue expression | Epidermal cells, Epithelial cells |

| Antibody # prefix | Conjugation | Ex/Em (nm) | Laser line | Detection channel | Dye Features |
|-------------------|--------------------|------------|------------|--------------------------|----------------------------------|
| BNC04 | CF®405S | 404/431 | 405 | DAPI (microscopy), AF405 | CF®405S Features |
| BNC88 | CF®488A | 490/515 | 488 | GFP, FITC | CF®488A Features |
| BNC68 | CF®568 | 562/583 | 532, 561 | RFP, TRITC | CF®568 Features |
| BNC94 | CF®594 | 593/614 | 561 | Texas Red® | CF®594 Features |
| BNC40 | CF®640R | 642/662 | 633-640 | Cy®5 | CF®640R Features |
| BNC47 | CF®647 | 650/665 | 633-640 | Cy®5 | CF®647 Features |
| BNCB | Biotin | N/A | N/A | N/A | |
| BNUB | Purified | N/A | N/A | N/A | |
| BNUM | Purified, BSA-free | N/A | N/A | N/A | |

Alexa Fluor, Pacific Blue, Pacific Orange, and Texas Red are trademarks or registered trademarks of Thermo Fisher Scientific; Cy is a registered trademark of Cytiva; IRDye, LI-COR, LI-COR Bioscience.

