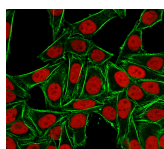


Ku-Holo Monoclonal Mouse Antibody (KU729)



Product Description

Recognizes a dimer of two proteins of 70 kDa and ~80 kDa, identified as two subunits of Ku. This MAB recognizes a conformational epitope of p70/p80 dimer, which is destroyed during Western blotting. The p70/p80 dimer is important for function of a 460 kDa DNA-dependent protein kinase. Ku protein plays a role in cell signaling, proliferation, DNA repair, replication, transcriptional activation, and apoptosis.

Primary antibodies are available purified, or with a selection of fluorescent CF® dyes and other labels. CF® dyes offer exceptional brightness and photostability. See the [CF® Dye Brochure](#) for more information. Note: Conjugates of blue fluorescent dyes like CF®405S and CF®405M are not recommended for detecting low abundance targets, because blue dyes have lower fluorescence and can give higher non-specific background than other dye colors.

Stock status: Because Biotium offers a large number of antibody and conjugation options, primary antibody conjugates may be made to order. Typical lead times are up to one week for CF® dye and biotin conjugates, and up to 2-3 weeks for fluorescent protein and enzyme conjugates. Please email order@biotium.com to inquire about stock status and lead times before placing your order.

Catalog number key for antibody number 0729, Anti-Ku-Holo (KU729)

Product attributes

Antibody number	#0729
Antibody reactivity (target)	Ku-Holo
Antibody type	Primary
Host species	Mouse
Clonality	Monoclonal
Clone	KU729
Isotype	IgG1, kappa
Molecular weight	70 kDa & 80 kDa
Synonyms	Ku (p70): 70kDa subunit of Ku antigen; ATP dependent DNA helicase 2 subunit 1; ATP-dependent DNA helicase II 70kDa subunit; CTC box-binding factor 75kDa subunit; CTC75; CTCBF; DNA repair protein XRCC6; G22P1; Ku autoantigen, 70kDa; Ku70; Kup70; Lupus Ku autoantigen protein p70; ML8; Thyroid autoantigen 70kD (Ku antigen); Thyroid-lupus autoantigen (TLAA); X-ray repair cross-complementing protein 6 (XRCC6) Ku (p80): 86kDa subunit of Ku antigen; ATP dependent DNA helicase 2 subunit 2; ATP dependent DNA helicase II 86kD subunit; ATP-dependent DNA helicase II 80kDa subunit; CTC box-binding factor 85kDa subunit; CTC85; CTCBF; DNA repair protein XRCC5; KARP1; Ku autoantigen 80kDa; Ku80; Ku86 autoantigen related protein 1; KUB2; Lupus Ku autoantigen protein p86; Nuclear factor IV (NFIV); Thyroid-lupus autoantigen (TLAA); X-ray repair cross-complementing protein 5 (XRCC5)
Human gene symbol	XRCC6
Entrez gene ID	2547 (p70); 7520 (p80)
SwissProt	P12956 (p70); P13010 (p80)
Unigene	292493 (p70); 388739 (p80)
Immunogen	Nuclear extract of human HL-60 cells
Antibody target cellular localization	Nucleus
Verified antibody applications	Flow (intracellular) (verified), IF (verified)
Species reactivity	Human, Non-human primates
Antibody application notes	Higher concentration may be required for direct detection using primary antibody conjugates than for indirect detection with secondary antibody. Immunofluorescence: 0.5-1 ug/mL, Immunocytochemistry acetone-fixed cells 0.25-0.5 ug/mL, Flow Cytometry 0.5-1 ug/million cells/0.1 mL. Does not react with mouse, rat or chicken; others not known. Optimal dilution for a specific application should be determined by user
Positive control	Human cancer K562, HL-60, HEP-2 or HeLa cells
Shipping condition	Room temperature
Storage Conditions	Store at 2 to 8 °C. Protect fluorescent conjugates from light. Note: store BSA-free antibodies at -10 to -35 °C
Shelf life	Guaranteed for at least 24 months from date of receipt when stored as recommended
Regulatory status	For research use only (RUO)
Antibody/conjugate formulation	Conjugates: 0.1 mg/mL in PBS/0.1% BSA/0.05% azide, HRP conjugates: 0.1 mg/mL in PBS/0.05% BSA, Purified: 0.2 mg/mL in PBS/0.05% BSA/0.05% azide, Purified, BSA-free: 1 mg/mL in PBS without azide
Antibody research areas	Apoptosis, Cell cycle, Signal transduction
Product origin	Product may contain either bovine serum albumin (BSA) from bovine serum (Bos taurus), or recombinant BSA produced in Chinese hamster ovary cells. Inquire for the specific lot.

Antibody # prefix	Conjugation	Ex/Em (nm)	Laser line	Detection channel	Dye Features
BNC04	CF®405S	404/431	405	DAPI (microscopy), AF405	CF®405S Features
BNC88	CF®488A	490/515	488	GFP, FITC	CF®488A Features
BNC68	CF®568	562/583	532, 561	RFP, TRITC	CF®568 Features
BNC94	CF®594	593/614	561	Texas Red®	CF®594 Features
BNC40	CF®640R	642/662	633-640	Cy®5	CF®640R Features
BNC47	CF®647	650/665	633-640	Cy®5	CF®647 Features
BNC74	CF®740	742/767	633-685	775/50	CF®740 Features
BNCB	Biotin	N/A	N/A	N/A	
BNUB	Purified	N/A	N/A	N/A	
BNUM	Purified, BSA-free	N/A	N/A	N/A	

Alexa Fluor, Pacific Blue, Pacific Orange, and Texas Red are trademarks or registered trademarks of Thermo Fisher Scientific; Cy is a registered trademark of Cytiva; IRDye, LI-COR, and Odyssey are registered trademarks of LI-COR Bioscience.

This datasheet was generated on September 15, 2025 at 09:57:54 AM. Visit product page to check for updated information before use.
Product link: <https://biotium.com/product/monoclonal-anti-ku-holo-p7083-ku729/>