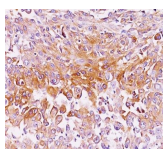


gp100 / Melanosome / PMEL17 / SILV Monoclonal Mouse Antibody (NKI-beteb)



Product Description

By immunohistochemistry, this antibody specifically recognizes a protein in melanocytes and melanomas. It reacts with junctional and blue nevus cells and variably with fetal and neonatal melanocytes. Intradermal nevi, normal adult melanocytes, and non-melanocytic cells are negative. It does not stain tumor cells of epithelial, lymphoid, glial, or mesenchymal origin. This Mab labels formalin-fixed, paraffin-embedded melanomas and other tumors showing melanocytic differentiation.

Primary antibodies are available purified, or with a selection of fluorescent CF® dyes and other labels. CF® dyes offer exceptional brightness and photostability. See the [CF® Dye Brochure](#) for more information. Note: Conjugates of blue fluorescent dyes like CF®405S and CF®405M are not recommended for detecting low abundance targets, because blue dyes have lower fluorescence and can give higher non-specific background than other dye colors.

Stock status: Because Biotium offers a large number of antibody and conjugation options, primary antibody conjugates may be made to order. Typical lead times are up to one week for CF® dye and biotin conjugates, and up to 2-3 weeks for fluorescent protein and enzyme conjugates. Please email order@biotium.com to inquire about stock status and lead times before placing your order.

Catalog number key for antibody number 0226, Anti-gp100 (NKI-beteb)

Product attributes

Antibody number	#0226
Antibody reactivity (target)	gp100, Pmel17, SILV
Antibody type	Primary
Host species	Mouse
Clonality	Monoclonal
Clone	NKI-beteb
Isotype	IgG2b, kappa
Molecular weight	90-100 kDa
Synonyms	95kDa melanocyte-specific secreted glycoprotein, M-beta, Melanocyte lineage specific antigen GP100, Melanocyte protein Pmel 17, Melanoma associated ME20 antigen, Melanosomal matrix protein17, p100, p26, PMEL17, Premelanosome protein, Secreted melanoma-associated ME20 antigen, SILV, Silver homolog
Human gene symbol	PMEL
Entrez gene ID	6490
SwissProt	P40967
Unigene	95972
Immunogen	Membranes from a human melanoma metastasis
Verified antibody applications	IHC (FPPE) (verified)
Antibody target cellular localization	Endoplasmic reticulum, Golgi apparatus
Expected antibody applications	ELISA (published for clone), Flow (intracellular) (published for clone), IHC (frozen) (published for clone), IF (published for clone), IP (published for clone)
Species reactivity	Horse, Human
Antibody application notes	Immunohistology formalin-fixed 1-2 ug/mL, Staining of formalin-fixed tissues requires boiling tissue sections in 10 mM citrate buffer, pH 6.0, for 10-20 min followed by cooling at RT for 20 minutes, Flow Cytometry 0.5-1 ug/million cells/0.1 mL, Immunofluorescence 1-2 ug/mL, Does not react with rat, others not tested, Optimal dilution for a specific application should be determined by user
Positive control	SK-MEL-28 cells or Melanoma
Shipping condition	Room temperature
Storage Conditions	Store at 2 to 8 °C, Protect fluorescent conjugates from light, Note: store BSA-free antibodies at -10 to -35 °C
Shelf life	Guaranteed for at least 24 months from date of receipt when stored as recommended
Regulatory status	For research use only (RUO)
Antibody/conjugate formulation	Conjugates: 0.1 mg/mL in PBS/0.1% BSA/0.05% azide, HRP conjugates: 0.1 mg/mL in PBS/0.05% BSA, Purified: 0.2 mg/mL in PBS/0.05% BSA/0.05% azide, Purified, BSA-free: 1 mg/mL in PBS without azide
Antibody research areas	Cancer
Product origin	Product may contain either bovine serum albumin (BSA) from bovine serum (Bos taurus), or recombinant BSA produced in Chinese hamster ovary cells. Inquire for the specific lot.
Cell/tissue expression	Melanocytes
Tumor expression	Melanoma

Antibody # prefix	Conjugation	Ex/Em (nm)	Laser line	Detection channel	Dye Features
BNC04	CF®405S	404/431	405	DAPI (microscopy), AF405	CF®405S Features
BNC88	CF®488A	490/515	488	GFP, FITC	CF®488A Features
BNC68	CF®568	562/583	532, 561	RFP, TRITC	CF®568 Features
BNC94	CF®594	593/614	561	Texas Red®	CF®594 Features
BNC40	CF®640R	642/662	633-640	Cy®5	CF®640R Features
BNC47	CF®647	650/665	633-640	Cy®5	CF®647 Features
BNC74	CF®740	742/767	633-685	775/50	CF®740 Features
BNCB	Biotin	N/A	N/A	N/A	
BNUB	Purified	N/A	N/A	N/A	
BNUM	Purified, BSA-free	N/A	N/A	N/A	

Alexa Fluor, Pacific Blue, Pacific Orange, and Texas Red are trademarks or registered trademarks of Thermo Fisher Scientific; Cy is a registered trademark of Cytiva; IRDye, LI-COR, and Odyssey are registered trademarks of LI-COR Bioscience.

References

Note: References for this clone sold by other suppliers may be listed for expected applications.

- Am J Pathol (1988) 130(1): 179. (mAb characterization; IHC, FFPE; IF; ELISA; IP; WB)
- Am J Pathol (1993) 143(6): 1579. (IHC, frozen; IF)
- J Biol Chem (2004) 279(27): 28330-28338. (epitope mapping; IP; reports that NKI-beteb does not work well for WB)
- Exp Dermatol (2010) 19(8): e282-e285. (IF; Flow, intracellular)

This datasheet was generated on August 5, 2025 at 02:43:36 AM. Visit product page to check for updated information before use.
Product link: <https://biotium.com/product/monoclonal-anti-pmel17-gp100-silv-nki-beteb/>