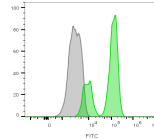


CD3e Monoclonal Mouse Antibody (B-B12)

Reacts with five invariable CD3 chains (designated as α and β) with molecular weight ranging from 16-28 kDa.



Product Description

Reacts with five invariable CD3 chains (designated as α and β) with molecular weight ranging from 16-28 kDa. CD3 is expressed, typically at high levels, on peripheral T cells and majority of T cell neoplasms. Thymocytes express CD3 at different level on the cell surface in the course of differentiation and, in cortical thymus, CD3 is predominantly Intracytoplasmic. The CD3 complex is closely associated at the lymphocyte cell surface with T cell antigen receptor (TCR) and is involved in transducing antigen-recognition signals into cytoplasm of T cells and in regulating the cell surface expression of the TCR complex. Primary antibodies are available purified, or with a selection of fluorescent CF[®] dyes and other labels. CF[®] dyes offer exceptional brightness and photostability. See the [CF[®] Dye Brochure](#) for more information. Note: Conjugates of blue fluorescent dyes like CF[®]405S and CF[®]405M are not recommended for detecting low abundance targets, because blue dyes have lower fluorescence and can give higher non-specific background than other dye colors. **Stock status:** Because Biotium offers a large number of antibody and conjugation options, primary antibody conjugates may be made to order. Typical lead times are up to one week for CF[®] dye and biotin conjugates, and up to 2-3 weeks for fluorescent protein and enzyme conjugates. Please email order@biotium.com to inquire about stock status and lead times before placing your order. **Catalog number key for antibody number 1052, Anti-CD3e (B-B12)**

Antibody #	prefix	Conjugation	Ex/Em	Concentration	Storage Buffer
BNC04	CF [®] 405S		404/431 nm	0.1 mg/mL	PBS, 0.1% BSA, 0.05% azide
BNC05	CF [®] 405M		408/452 nm	0.1 mg/mL	PBS, 0.1% BSA, 0.05% azide
BNC06	CF [®] 405L		395/545 nm	0.1 mg/mL	PBS, 0.1% BSA, 0.05% azide
BNC88	CF [®] 488A		490/515 nm	0.1 mg/mL	PBS, 0.1% BSA, 0.05% azide
BNC14	CF [®] 514		516/548 nm	0.1 mg/mL	PBS, 0.1% BSA, 0.05% azide
BNC43	CF [®] 543		541/560 nm	0.1 mg/mL	PBS, 0.1% BSA, 0.05% azide
BNC55	CF [®] 555		555/565 nm	0.1 mg/mL	PBS, 0.1% BSA, 0.05% azide
BNC68	CF [®] 568		562/583 nm	0.1 mg/mL	PBS, 0.1% BSA, 0.05% azide
BNC94	CF [®] 594		593/614 nm	0.1 mg/mL	PBS, 0.1% BSA, 0.05% azide
BNC40	CF [®] 640R		642/662 nm	0.1 mg/mL	PBS, 0.1% BSA, 0.05% azide
BNC47	CF [®] 647		650/665 nm	0.1 mg/mL	PBS, 0.1% BSA, 0.05% azide
BNC60	CF [®] 660C		667/685 nm	0.1 mg/mL	PBS, 0.1% BSA, 0.05% azide
BNC61	CF [®] 660R		663/682 nm	0.1 mg/mL	PBS, 0.1% BSA, 0.05% azide
BNC80	CF [®] 680		681/698 nm	0.1 mg/mL	PBS, 0.1% BSA, 0.05% azide
BNC81	CF [®] 680R		680/701 nm	0.1 mg/mL	PBS, 0.1% BSA, 0.05% azide
BNC00	CF [®] 700		695/720 nm	0.1 mg/mL	PBS, 0.1% BSA, 0.05% azide
BNC70	CF [®] 770		770/797 nm	0.1 mg/mL	PBS, 0.1% BSA, 0.05% azide
BNCR	R-PE (PE)		496, 546, 565/578 nm	0.1 mg/mL	PBS, 0.1% BSA, 0.05% azide
BNCA	APC		650/660 nm	0.1 mg/mL	PBS, 0.1% BSA, 0.05% azide
BNCP	PerCP		482/677 nm	0.1 mg/mL	PBS, 0.1% BSA, 0.05% azide
BNCB	Biotin	N/A	N/A	0.1 mg/mL	PBS, 0.1% BSA, 0.05% azide
BNCAP	Alkaline Phosphatase	N/A	N/A	0.1 mg/mL	PBS, 0.1% BSA, 0.05% azide
BNCH	Horse radish Peroxidase	N/A	N/A	0.1 mg/mL	PBS, 0.05% BSA, no azide
BNUB	Purified, with BSA	N/A	N/A	0.2 mg/mL	PBS, 0.05% BSA, 0.05% azide
BNUM	Purified, BSA-free	N/A	N/A	1 mg/mL	PBS, no BSA, no azide

References

Kishimoto T. et al., eds. Leukocyte Typing VI, p44-48 and p1111, Garland Publishing, Inc, New York and London, 1997. Meuer SC et al. Nature 1983, 303(5920):808-810. Reinherz et al., Cell 30, 715, (1982). Borst et al., J. Biol. Chem. 258, 5135, (1983). Van den Elsen et al., Nature 312, (1984). Furley et al., Cell 46, 75, (1986). Gold et al., Nature 321, 4, (1986). Oettgen and Terhorst, Hum. Immunol. 18, 187, (1987). Clevers et al., Ann. Rev. Immunol. 6, 629, (1988).

Product attributes

Antibody number	1052
Reactivity (target)	CD3e
Antibody type	Primary
Host species	Mouse
Clonality	Monoclonal
Clone	B-B12
Isotype	IgG1, kappa
Molecular weight	20 kDa
Synonyms	CD 3E, CD3 epsilon, CD3 TCR complex, CD3E, CD3e antigen epsilon polypeptide (TIT3 complex), T cell antigen receptor complex epsilon subunit of T3, T-cell surface antigen T3/Leu-4 epsilon chain, T-cell surface glycoprotein CD3 epsilon chain, T3E, TCRE, TIT3 complex
Human gene symbol	CD3E
Entrez gene ID	916
SwissProt	P07766
Unigene	3003
Immunogen	Human T cell leukemia cells
Cellular localization	Cytoplasmic, Membrane/cell surface
Species reactivity	Human
Applications	Immunofluorescence, Flow cytometry
Application notes	Flow Cytometry 0.5-1 ug/million cells/0.1 mL, Immunofluorescence 1-2 ug/mL. Optimal dilution for a specific application should be determined by user
Positive control	Jurkat cells. Tonsil and lymph node
Shipping condition	Room temperature
Storage Conditions	Store at 2 to 8 °C, Protect fluorescent conjugates from light, Note: store BSA-free antibodies at -10 to -35 °C
Shelf life	Guaranteed for at least 24 months from date of receipt when stored as recommended
Regulatory status	For research use only (RUO)
Supplied As	Conjugates: 0.1 mg/mL in PBS/0.1% BSA/0.05% azide, HRP conjugates: 0.1 mg/mL in PBS/0.05% BSA, Purified, BSA-free: 1 mg/mL in PBS without azide, Purified: 0.2 mg/mL in PBS/0.05% BSA/0.05% azide
Antibody research areas	Immunology
Cell/tissue expression	Lymphocytes, T-cells
Tumor expression	Leukemia/lymphoma