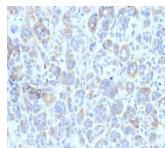


Tyrosinase Related Protein-1 (TYRP1) Monoclonal Mouse Antibody (TA99)



Product Description

This antibody reacts with a 75 kDa melanocyte-specific gene product, identified as Tyrosinase-related protein-1 (TRP-1). It is involved in melanin synthesis. TRP-1 is present on the melanosomal membranes of melanoma, normal melanocytes and nevi. Recent evidence suggests that TRP-1 is involved in maintaining stability of tyrosinase protein and modulating its catalytic activity. TRP-1 is also involved in maintenance of melanosome ultrastructure and affects melanocyte proliferation and cell death. Primary antibodies are available purified, or with a selection of fluorescent CF® dyes and other labels. CF® dyes offer exceptional brightness and photostability. See the [CF® Dye Brochure](#) for more information. Note: Conjugates of blue fluorescent dyes like CF®405S and CF®405M are not recommended for detecting low abundance targets, because blue dyes have lower fluorescence and can give higher non-specific background than other dye colors. **Stock status:** Because Biotium offers a large number of antibody and conjugation options, primary antibody conjugates may be made to order. Typical lead times are up to one week for CF® dye and biotin conjugates, and up to 2-3 weeks for fluorescent protein and enzyme conjugates. Please email order@biotium.com to inquire about stock status and lead times before placing your order.

References

Note: References for this clone sold by other suppliers may be listed for expected applications.

1. J Invest Dermatol (1985) 85:169-174. (IP; IHC, frozen)
2. PNAS USA (1987) 84, 4200-4204. (in vivo imaging melanoma)
3. J Exp Med (1995) 182: 1609-1614. (functional studies)
4. J Cell Biol (2015) 209(4): 563-577. (Flow, surface; IF)
5. J Cell Mol Med (2017) 21(4): 802-815. (IHC, FFPE)

Product attributes

Antibody number	#0806
Antibody reactivity (target)	TRP1
Antibody type	Primary
Host species	Mouse
Clonality	Monoclonal
Clone	TA99
Isotype	IgG2a, kappa
Molecular weight	75 kDa
Synonyms	5, 6 dihydroxyindole 2 carboxylic acid oxidase, 6-dihydroxyindole-2-carboxylic acid oxidase, Associated with iris pigmentation, CAS2, Catalase B (CATB), DHICA oxidase, Glycoprotein75 (GP75), Melanoma antigen gp75, Tyrosinase-related protein 1 (TYRP1), TYRPP
Human gene symbol	TYRP1
Entrez gene ID	7306
SwissProt	P17643
Unigene	270279
Immunogen	SK-MEL-23 cells
Antibody target cellular localization	Vesicular
Expected antibody applications	Flow, surface (published for clone), IHC (FFPE) (published for clone), IHC (frozen) (published for clone), IF (published for clone), IP (published for clone)
Species reactivity	Human, Mouse
Antibody application notes	Higher concentration may be required for direct detection using primary antibody conjugates than for indirect detection with secondary antibody, Immunofluorescence: 1-2 ug/mL, Immunohistology (frozen only) 0.5-1 ug/mL, Flow Cytometry 0.5-1 ug/million cells/0.1 mL, Optimal dilution for a specific application should be determined by user
Positive control	SK-MEL-23, SK-MEL-19, SK-MEL-30 cells or Melanoma.
Shipping condition	Room temperature
Storage Conditions	Store at 2 to 8 °C, Protect fluorescent conjugates from light, Note: store BSA-free antibodies at -10 to -35 °C
Shelf life	Guaranteed for at least 24 months from date of receipt when stored as recommended
Regulatory status	For research use only (RUO)
Antibody/conjugate formulation	Conjugates: 0.1 mg/mL in PBS/0.1% BSA/0.05% azide, HRP conjugates: 0.1 mg/mL in PBS/0.05% BSA, Purified: 0.2 mg/mL in PBS/0.05% BSA/0.05% azide, Purified, BSA-free: 1 mg/mL in PBS without azide
Antibody research areas	Cancer
Cell/tissue expression	Melanocytes
Tumor expression	Melanoma

Antibody # prefix	Conjugation	Ex/Em (nm)	Laser line	Detection channel
BNC04	CF®405S	404/431	405	DAPI (microscopy), AF405
BNC88	CF®488A	490/515	488	GFP, FITC
BNC68	CF®568	562/583	532, 561	RFP, TRITC
BNC94	CF®594	593/614	561	Texas Red®
BNC40	CF®640R	642/662	633-640	Cy®5
BNC47	CF®647	650/665	633-640	Cy®5
BNCB	Biotin	N/A	N/A	N/A
BNUB	Purified	N/A	N/A	N/A
BNUM	Purified, BSA-free	N/A	N/A	N/A

Dye Features

[CF®405S Features](#)
[CF®488A Features](#)
[CF®568 Features](#)
[CF®594 Features](#)
[CF®640R Features](#)
[CF®647 Features](#)

Alexa Fluor, Pacific Blue, Pacific Orange, and Texas Red are trademarks or registered trademarks of Thermo Fisher Scientific; Cy is a registered trademark of Cytiva; IRDye, LI-COR, and LI-COR Bioscience.