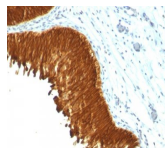


Cytokeratin, Multi Monoclonal Mouse Antibody (KRT/457)



Product Description

Twenty human keratins are resolved with two-dimensional gel electrophoresis into acidic (pI 6.0) subfamilies. This antibody recognizes acidic (Type I or LMW) and basic (Type II or HMW) cytokeratins, including 59 kDa (CK4); 58 kDa (CK5); 56 kDa (CK6); 52 kDa (CK8); 56.5 kDa (CK10); 53 kDa (CK13) and 45 kDa (CK18). This is a broad-spectrum antibody, which has been reported to differentiate epithelial tumors from non-epithelial tumors. Many studies have shown the usefulness of keratins as markers in cancer research and tumor diagnosis. Primary antibodies are available purified, or with a selection of fluorescent CF® dyes and other labels. CF® dyes offer exceptional brightness and photostability. See the [CF® Dye Brochure](#) for more information. Note: Conjugates of blue fluorescent dyes like CF®405S and CF®405M are not recommended for detecting low abundance targets, because blue dyes have lower fluorescence and can give higher non-specific background than other dye colors. **Stock status:** Because Biotium offers a large number of antibody and conjugation options, primary antibody conjugates may be made to order. Typical lead times are up to one week for CF® dye and biotin conjugates, and up to 2-3 weeks for fluorescent protein and enzyme conjugates. Please email order@biotium.com to inquire about stock status and lead times before placing your order. **Catalog number key for antibody number 0457, Anti-Cytokeratin, multi (KRT/457)**

Product attributes

Antibody number	#0457
Antibody reactivity (target)	Cytokeratin, multi
Antibody type	Primary
Host species	Mouse
Clonality	Monoclonal
Clone	KRT/457
Isotype	IgG1
Molecular weight	Multiple
Synonyms	K18; KRT18; Keratin, type II cytoskeletal 1b; K77; CK-18; Keratin 1B; Keratin-77; Cytokeratin-18; Type-II Keratin Kb39
Human gene symbol	KRT4
Entrez gene ID	3851 (CK4); 3852 (CK5); 3853 (CK6A); 3854 (CK6B); 286887 (CK6C); 3856 (CK8); 3858 (CK10); 3860 (CK13); 3875 (CK18) (Human)
SwissProt	P02538 (CK6A); P04259 (CK6B); P13647 (CK5); P19013 (CK4); P48668 (CK6C)
Immunogen	Keratin-enriched preparation from cultured human epithelial cells
Verified antibody applications	IHC (FFPE) (verified)
Antibody target cellular localization	Cytoskeleton
Species reactivity	Cow, Frog, Goat, Guinea pig, Human, Monkey, Mouse, Pig, Rat
Antibody application notes	Higher concentration may be required for direct detection using primary antibody conjugates than for indirect detection with secondary antibody, Flow Cytometry 0.5-1 ug/million cells/0.1 mL, Immunofluorescence 0.5-1.0 ug/mL, Western blotting 0.5-1.0 ug/mL
Positive control	A431 cells, Skin, Colon carcinoma
Shipping condition	Room temperature
Storage Conditions	Store at 2 to 8 °C, Protect fluorescent conjugates from light, Note: store BSA-free antibodies at -10 to -35 °C
Shelf life	Guaranteed for at least 24 months from date of receipt when stored as recommended
Regulatory status	For research use only (RUO)
Antibody/conjugate formulation	Conjugates: 0.1 mg/mL in PBS/0.1% BSA/0.05% azide, HRP conjugates: 0.1 mg/mL in PBS/0.05% BSA, Purified: 0.2 mg/mL in PBS/0.05% BSA/0.05% azide, Purified, BSA-free: 1 mg/mL in PBS without azide
Antibody research areas	Cancer, Cytoskeleton
Cell/tissue expression	Epidermal cells, Epithelial cells

Antibody # prefix	Conjugation	Ex/Em (nm)	Laser line	Detection channel	Dye Features
BNC04	CF®405S	404/431	405	DAPI (microscopy), AF405	CF®405S Features
BNC88	CF®488A	490/515	488	GFP, FITC	CF®488A Features
BNC68	CF®568	562/583	532, 561	RFP, TRITC	CF®568 Features
BNC94	CF®594	593/614	561	Texas Red®	CF®594 Features
BNC40	CF®640R	642/662	633-640	Cy®5	CF®640R Features
BNC47	CF®647	650/665	633-640	Cy®5	CF®647 Features
BNCB	Biotin	N/A	N/A	N/A	
BNUB	Purified	N/A	N/A	N/A	
BNUM	Purified, BSA-free	N/A	N/A	N/A	

Alexa Fluor, Pacific Blue, Pacific Orange, and Texas Red are trademarks or registered trademarks of Thermo Fisher Scientific; Cy is a registered trademark of Cytiva; IRDye, LI-COR, LI-COR Bioscience.