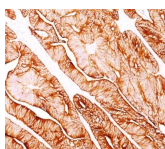


# Cytokeratin 5/8 Monoclonal Mouse Antibody (C-50)



## Product Description

This antibody reacts with keratin 5 (58 kDa) and keratin 8 (52.5 kDa). Simple epithelia express cytokeratin 8 in combination with 18. On the other hand, basal cells of stratified epithelia express cytokeratin 5 paired with 14. This antibody therefore, reacts with a wide range of epithelia and their carcinomas.

Primary antibodies are available purified, or with a selection of fluorescent CF® dyes and other labels. CF® dyes offer exceptional brightness and photostability. See the [CF® Dye Brochure](#) for more information. Note: Conjugates of blue fluorescent dyes like CF®405S and CF®405M are not recommended for detecting low abundance targets, because blue dyes have lower fluorescence and can give higher non-specific background than other dye colors.

**Stock status:** Because Biotium offers a large number of antibody and conjugation options, primary antibody conjugates may be made to order. Typical lead times are up to one week for CF® dye and biotin conjugates, and up to 2-3 weeks for fluorescent protein and enzyme conjugates. Please email [order@biotium.com](mailto:order@biotium.com) to inquire about stock status and lead times before placing your order.

**Catalog number key for antibody number 0948, Anti-Cytokeratin 5 (C-50)**

## Product attributes

Antibody number	#0948
Antibody reactivity (target)	Cytokeratin 5/8
Antibody type	Primary
Host species	Mouse
Clonality	Monoclonal
Clone	C-50
Isotype	IgG1, kappa
Molecular weight	58 kDa (CK5); 52.5 kDa (CK8)
Synonyms	CK5; DDD; EBS2; Epidermolysis bullosa simplex 2 Dowling-Meara/Kobner/Weber-Cockayne Types; K5; Keratin complex 2, basic, Gene 5; Keratin Type II Cytoskeletal 5; Keratin-5; KRT5; KRT5A; Type II Cytoskeletal 5; Type-II Keratin Kb5. CK8; CARD2; CYK8; CYKER; Cytokeratin Endo A; DreK8; EndoA; K2C8; K8; Keratin 8; Krt 2.8; KRT8; Type-II Keratin Kb8
Human gene symbol	KRT5
Entrez gene ID	3852 (CK5); 3856 (CK8)
SwissProt	P13647 (CK5); P05787 (CK8)
Unigene	433845 (CK5); 533782 & 708445 (CK8)
Immunogen	Cytoskeletal preparation from HeLa cells
Antibody target cellular localization	Cytoskeleton
Verified antibody applications	IHC (FFPE) (verified)
Species reactivity	Cow, Dog, Ferret, Hamster, Human, Mouse, Pig, Rat, Sheep
Antibody application notes	Higher concentration may be required for direct detection using primary antibody conjugates than for indirect detection with secondary antibody. Immunohistology formalin-fixed 0.5-1.0 ug/mL. For staining of formalin-fixed tissues, digest sections with trypsin at 1mg/mL PBS, 15 min at RT. Flow Cytometry 0.5-1 ug/million cells/0.1 mL. Immunofluorescence 0.5-1.0 ug/mL. Western blotting 0.5-1.0 ug/mL. Does not react with chicken , or Xenopus. Optimal dilution for a specific application should be determined by user
Positive control	HepG2 or A431 cells. Skin or Squamous cell carcinoma
Shipping condition	Room temperature
Storage Conditions	Store at 2 to 8 °C, Protect fluorescent conjugates from light, Note: store BSA-free antibodies at -10 to -35 °C
Shelf life	Guaranteed for at least 24 months from date of receipt when stored as recommended
Regulatory status	For research use only (RUO)
Antibody/conjugate formulation	Conjugates: 0.1 mg/mL in PBS/0.1% BSA/0.05% azide, HRP conjugates: 0.1 mg/mL in PBS/0.05% BSA, Purified: 0.2 mg/mL in PBS/0.05% BSA/0.05% azide, Purified, BSA-free: 1 mg/mL in PBS without azide
Antibody research areas	Cancer, Cytoskeleton
Product origin	Product may contain either bovine serum albumin (BSA) from bovine serum (Bos taurus), or recombinant BSA produced in Chinese hamster ovary cells. Inquire for the specific lot.
Cell/tissue expression	Epithelial cells
Tumor expression	Breast cancer, Colorectal cancer, Lung cancer, Ovarian cancer, Thyroid cancer

Antibody # prefix	Conjugation	Ex/Em (nm)	Laser line	Detection channel	Dye Features
BNC04	CF®405S	404/431	405	DAPI (microscopy), AF405	<a href="#">CF®405S Features</a>
BNC88	CF®488A	490/515	488	GFP, FITC	<a href="#">CF®488A Features</a>
BNC68	CF®568	562/583	532, 561	RFP, TRITC	<a href="#">CF®568 Features</a>
BNC94	CF®594	593/614	561	Texas Red®	<a href="#">CF®594 Features</a>
BNC40	CF®640R	642/662	633-640	Cy®5	<a href="#">CF®640R Features</a>
BNC47	CF®647	650/665	633-640	Cy®5	<a href="#">CF®647 Features</a>
BNC74	CF®740	742/767	633-685	775/50	<a href="#">CF®740 Features</a>
BNCB	Biotin	N/A	N/A	N/A	
BNUB	Purified	N/A	N/A	N/A	
BNUM	Purified, BSA-free	N/A	N/A	N/A	

Alexa Fluor, Pacific Blue, Pacific Orange, and Texas Red are trademarks or registered trademarks of Thermo Fisher Scientific; Cy is a registered trademark of Cytiva; IRDye, LI-COR, and Odyssey are registered trademarks of LI-COR Bioscience.

This datasheet was generated on July 13, 2025 at 09:15:25 AM. Visit product page to check for updated information before use.  
Product link: <https://biotium.com/product/monoclonal-anti-cytokeratin-58-c-50/>