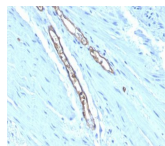


# Blood Group Antigen A Monoclonal Mouse Antibody (HE-193)



## Product Description

This antibody is applicable for staining ABO blood group A (monofucosyl and difucosyl A antigens with chain types 1, 2, 3, 4, 5, 6). It also recognizes Forssman antigen. The histo-blood group ABO involves three carbohydrate antigens: A, B, and H. Blood group antigens are generally defined as molecules formed by sequential addition of saccharides to the carbohydrate side chains of lipids and proteins detected on erythrocytes and certain epithelial cells. Blood group related antigens represent a group of carbohydrate determinants carried on both glycolipids and glycoproteins. They are usually mucin-type, and are detected on erythrocytes, certain epithelial cells, and in secretions of certain individuals. Sixteen genetically and biosynthetically distinct but inter-related specificities belong to this group of antigens, including A, B, H, Lewis A, Lewis B, Lewis X, Lewis Y, and precursor type 1 chain antigen. This antibody is available purified with BSA/azide at 200 ug/mL, or BSA/azide-free at 1 mg/mL.

## Product attributes

<b>Antibody number</b>	#1064
<b>Antibody reactivity (target)</b>	Blood Group A, Forssman Antigen
<b>Antibody type</b>	Primary
<b>Host species</b>	Mouse
<b>Clonality</b>	Monoclonal
<b>Clone</b>	HE-193
<b>Isotype</b>	IgM, kappa
<b>Molecular weight</b>	Multiple
<b>Synonyms</b>	ABO Type A; Blood Group A; Forssman antigen
<b>Human gene symbol</b>	ABO
<b>Entrez gene ID</b>	28
<b>SwissProt</b>	P16442
<b>Unigene</b>	654423
<b>Immunogen</b>	Mixture of erythrocytes of blood group A and glycoprotein fraction isolated from the saliva of secretors with blood group A
<b>Verified antibody applications</b>	IHC (FPPE) (verified)
<b>Antibody target cellular localization</b>	Plasma membrane
<b>Species reactivity</b>	Human
<b>Antibody application notes</b>	Immunohistology formalin-fixed 0.5-1.0 ug/mL. Staining of formalin/paraffin tissues requires boiling tissue sections in 10 mM citrate buffer, pH 6.0, for 10-20 min followed by cooling at RT for 20 min. Immunofluorescence 0.5-1 ug/mL. Optimal dilution for a specific application should be determined by user
<b>Positive control</b>	KG1 cells or human colorectal carcinoma tissues.
<b>Shipping condition</b>	Room temperature
<b>Storage Conditions</b>	Store at 2 to 8 °C. Note: store BSA-free antibodies at -10 to -35 °C
<b>Shelf life</b>	Guaranteed for at least 24 months from date of receipt when stored as recommended
<b>Regulatory status</b>	For research use only (RUO)
<b>Antibody/conjugate formulation</b>	Conjugates: 0.1 mg/mL in PBS/0.1% BSA/0.05% azide, HRP conjugates: 0.1 mg/mL in PBS/0.05% BSA, Purified: 0.2 mg/mL in PBS/0.05% BSA/0.05% azide, Purified, BSA-free: 1 mg/mL in PBS without azide
<b>Antibody research areas</b>	Cancer, Hematology