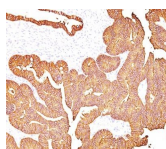


Ep-CAM / CD326 Monoclonal Mouse Antibody (323/A3)



Product Description

EGP40 is a 40-43 kDa transmembrane epithelial glycoprotein, also identified as epithelial specific antigen (ESA), or epithelial cellular adhesion molecule (Ep-CAM). It is expressed on baso-lateral cell surface in most simple epithelia and a vast majority of carcinomas. This antibody has been used to distinguish adenocarcinoma from pleural mesothelioma and hepatocellular carcinoma. This antibody is also useful in distinguishing serous carcinomas of the ovary from mesothelioma.

Primary antibodies are available purified, or with a selection of fluorescent CF® dyes and other labels. CF® dyes offer exceptional brightness and photostability. See the [CF® Dye Brochure](#) for more information. Note: Conjugates of blue fluorescent dyes like CF®405S and CF®405M are not recommended for detecting low abundance targets, because blue dyes have lower fluorescence and can give higher non-specific background than other dye colors.

Stock status: Because Biotium offers a large number of antibody and conjugation options, primary antibody conjugates may be made to order. Typical lead times are up to one week for CF® dye and biotin conjugates, and up to 2-3 weeks for fluorescent protein and enzyme conjugates. Please email order@biotium.com to inquire about stock status and lead times before placing your order.

Catalog number key for antibody number 0396, Anti-CD326 (323/A3)

Call us : [800-304-5357](tel:800-304-5357)

Product attributes

| | |
|--|---|
| Antibody number | #0396 |
| Antibody reactivity (target) | CD326, Ep-CAM |
| Antibody type | Primary |
| Host species | Mouse |
| Clonality | Monoclonal |
| Clone | 323/A3 |
| Isotype | IgG1, kappa |
| Molecular weight of antigen | 40-43 kDa |
| Synonyms | Adenocarcinoma-associated Antigen; Cell Surface Glycoprotein Trop-1; EGP2; EGP314; EGP40; Epithelial Cell Adhesion Molecule; Epithelial Glycoprotein 314; ESA; KSA; TACD1; TROP1; Tumor-associated Calcium Signal Transducer 1 (TACSTD1) |
| Human gene symbol | TACSTD1 |
| Entrez gene ID | 4072 |
| SwissProt | P16422 |
| Unigene | 542050 |
| Immunogen | MCF-7 human breast cancer cells |
| Antibody target cellular localization | Plasma membrane |
| Verified antibody applications | Flow (verified), IHC (FFPE) (verified) |
| Species reactivity | Human |
| Antibody application notes | Higher concentration may be required for direct detection using primary antibody conjugates than for indirect detection with secondary antibody. Immunofluorescence: 1-2 ug/mL. Does not react with rat; others not known. Immunohistochemistry formalin-fixed 0.5-1.0 ug/mL. Staining of formalin-fixed tissues requires boiling tissue sections in 10 mM citrate buffer, pH 6.0, for 10-20 min followed by cooling at RT for 20 minutes. Flow Cytometry 0.5-1 ug/million cells/0.1 mL, Western blotting 0.5-1.0 ug/mL. Optimal dilution for a specific application should be determined by user |
| Positive control | HT29 cells or breast tumor |
| Shipping condition | Room temperature |
| Storage Conditions | Store at 2 to 8 °C, Protect fluorescent conjugates from light, Note: store BSA-free antibodies at -10 to -35 °C |
| Shelf life | Guaranteed for at least 24 months from date of receipt when stored as recommended |
| Regulatory status | For research use only (RUO) |
| Antibody/conjugate formulation | Conjugates: 0.1 mg/mL in PBS/0.1% BSA/0.05% azide, HRP conjugates: 0.1 mg/mL in PBS/0.05% BSA, Purified: 0.2 mg/mL in PBS/0.05% BSA/0.05% azide, Purified, BSA-free: 1 mg/mL in PBS without azide |
| Antibody research areas | Cancer |
| Product origin | Product may contain either bovine serum albumin (BSA) from bovine serum (<i>Bos taurus</i>), or recombinant BSA produced in Chinese hamster ovary cells. Inquire for the specific lot. |
| Cell/tissue expression | Epithelial cells |
| Tumor expression | Adenocarcinoma |

| Antibody # prefix | Conjugation | Ex/Em (nm) | Laser line | Detection channel | Dye Features |
|-------------------|--------------------|------------|------------|--------------------------|----------------------------------|
| BNC04 | CF®405S | 404/431 | 405 | DAPI (microscopy), AF405 | CF®405S Features |
| BNC88 | CF®488A | 490/515 | 488 | GFP, FITC | CF®488A Features |
| BNC68 | CF®568 | 562/583 | 532, 561 | RFP, TRITC | CF®568 Features |
| BNC94 | CF®594 | 593/614 | 561 | Texas Red® | CF®594 Features |
| BNC40 | CF®640R | 642/662 | 633-640 | Cy®5 | CF®640R Features |
| BNC47 | CF®647 | 650/665 | 633-640 | Cy®5 | CF®647 Features |
| BNC74 | CF®740 | 742/767 | 633-685 | 775/50 | CF®740 Features |
| BNCB | Biotin | N/A | N/A | N/A | |
| BNUB | Purified | N/A | N/A | N/A | |
| BNUM | Purified, BSA-free | N/A | N/A | N/A | |

Alexa Fluor, Pacific Blue, Pacific Orange, and Texas Red are trademarks or registered trademarks of Thermo Fisher Scientific; Cy is a registered trademark of Cytiva; IRDye, LI-COR, and Odyssey are registered trademarks of LI-COR Bioscience.

This datasheet was generated on June 5, 2026 at 01:12:31 AM. Visit product page to check for updated information before use.

Product link: <https://biotium.com/product/monoclonal-anti-ep-cam-cd326-323a3/>