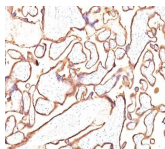


# PLAP Monoclonal Mouse Antibody (PL8-F6)



## Product Description

Reacts with a 70 kDa membrane-bound isozyme (Regan and Nagao type) of Placental Alkaline Phosphatase (PLAP) occurring in the placenta during the 3rd trimester of gestation. It is highly specific for PLAP and shows no cross-reaction with other isozymes of alkaline phosphatase. Anti-PLAP reacts with germ cell tumors and can discriminate between these and other neoplasms. Somatic neoplasms e.g. breast, gastrointestinal, prostatic, and urinary cancers may also immunoreact with antibodies to PLAP. Anti-PLAP positivity in conjunction with anti-keratin negativity favors seminoma over carcinoma. Germ cell tumors are usually anti-keratin positive, but they regularly fail to stain with anti-EMA, whereas most carcinomas stain with anti-EMA. Anti-PLAP has been useful in the diagnosis of gestational trophoblastic disease.

Primary antibodies are available purified, or with a selection of fluorescent CF® dyes and other labels. CF® dyes offer exceptional brightness and photostability. See the [CF® Dye Brochure](#) for more information. Note: Conjugates of blue fluorescent dyes like CF®405S and CF®405M are not recommended for detecting low abundance targets, because blue dyes have lower fluorescence and can give higher non-specific background than other dye colors.

**Stock status:** Because Biotium offers a large number of antibody and conjugation options, primary antibody conjugates may be made to order. Typical lead times are up to one week for CF® dye and biotin conjugates, and up to 2-3 weeks for fluorescent protein and enzyme conjugates. Please email [order@biotium.com](mailto:order@biotium.com) to inquire about stock status and lead times before placing your order.

**Catalog number key for antibody number 0889, Anti-PLAP (PL8-F6)**

## Product attributes

|                                       |  |
|---------------------------------------|--|
| Antibody number                       | #0889  |
| Antibody reactivity (target)          | PLAP   |
| Antibody type                         | Primary  |
| Host species                          | Mouse  |
| Clonality                             | Monoclonal   |
| Clone                                 | PL8-F6   |
| Isotype                               | IgG2b, kappa   |
| Molecular weight                      | 70 kDa   |
| Synonyms                              | Alkaline phosphatase placental type, Alkaline phosphatase Regan Isozyme, ALP, Alp1, ALPP, Germ-cell alkaline phosphatase, nagao Isozyme, PALP, Placental alkaline phosphatase 1, placental heat-stable alkaline phosphatase, PLAP-1, PLAP1   |
| Human gene symbol                     | ALPP   |
| Entrez gene ID                        | 250  |
| SwissProt                             | P05187   |
| Unigene                               | 284255   |
| Immunogen                             | Purified human PLAP protein  |
| Verified antibody applications        | IHC (FFPE) (verified), WB (verified)   |
| Antibody target cellular localization | Plasma membrane  |
| Species reactivity                    | Human  |
| Antibody application notes            | Immunohistology Frozen & formalin-fixed 0.25-0.5 ug/mL, No special pretreatment is required for the immunohistochemical staining of formalin-fixed tissues, Immunofluorescence 0.5-1 ug/mL, Flow Cytometry 0.5-1 ug/million cells/0.1 mL, Optimal dilution for a specific application should be determined by user |
| Positive control                      | HepG2 cells. Placenta or seminoma  |
| Shipping condition                    | Room temperature   |
| Storage Conditions                    | Store at 2 to 8 °C, Protect fluorescent conjugates from light, Note: store BSA-free antibodies at -10 to -35 °C  |
| Shelf life                            | Guaranteed for at least 24 months from date of receipt when stored as recommended  |
| Regulatory status                     | For research use only (RUO)  |
| Antibody/conjugate formulation        | Conjugates: 0.1 mg/mL in PBS/0.1% BSA/0.05% azide, HRP conjugates: 0.1 mg/mL in PBS/0.05% BSA, Purified: 0.2 mg/mL in PBS/0.05% BSA/0.05% azide, Purified, BSA-free: 1 mg/mL in PBS without azide  |
| Cell/tissue expression                | Placenta   |
| Antibody research areas               | Metabolism   |
| Product origin                        | Product may contain either bovine serum albumin (BSA) from bovine serum (Bos taurus), or recombinant BSA produced in Chinese hamster ovary cells. Inquire for the specific lot.  |
| Tumor expression                      | Ovarian cancer, Testicular cancer  |

| Antibody # prefix | Conjugation        | Ex/Em (nm) | Laser line | Detection channel        | Dye Features                     |
|-------------------|--------------------|------------|------------|--------------------------|----------------------------------|
| BNC04             | CF®405S            | 404/431    | 405        | DAPI (microscopy), AF405 | <a href="#">CF®405S Features</a> |
| BNC88             | CF®488A            | 490/515    | 488        | GFP, FITC                | <a href="#">CF®488A Features</a> |
| BNC68             | CF®568             | 562/583    | 532, 561   | RFP, TRITC               | <a href="#">CF®568 Features</a>  |
| BNC94             | CF®594             | 593/614    | 561        | Texas Red®               | <a href="#">CF®594 Features</a>  |
| BNC40             | CF®640R            | 642/662    | 633-640    | Cy®5                     | <a href="#">CF®640R Features</a> |
| BNC47             | CF®647             | 650/665    | 633-640    | Cy®5                     | <a href="#">CF®647 Features</a>  |
| BNC74             | CF®740             | 742/767    | 633-685    | 775/50                   | <a href="#">CF®740 Features</a>  |
| BNCB              | Biotin             | N/A        | N/A        | N/A                      |                                  |
| BNUB              | Purified           | N/A        | N/A        | N/A                      |                                  |
| BNUM              | Purified, BSA-free | N/A        | N/A        | N/A                      |                                  |

Alexa Fluor, Pacific Blue, Pacific Orange, and Texas Red are trademarks or registered trademarks of Thermo Fisher Scientific; Cy is a registered trademark of Cytiva; IRDye, LI-COR, and Odyssey are registered trademarks of LI-COR Bioscience.

This datasheet was generated on August 12, 2025 at 04:24:42 AM. Visit product page to check for updated information before use.  
Product link: <https://biotium.com/product/monoclonal-anti-plap-placental-alkaline-phosphatase-pl8-f6/>